

CHEERFUL GREETINGS

FROM

East St. Louis, Ill.



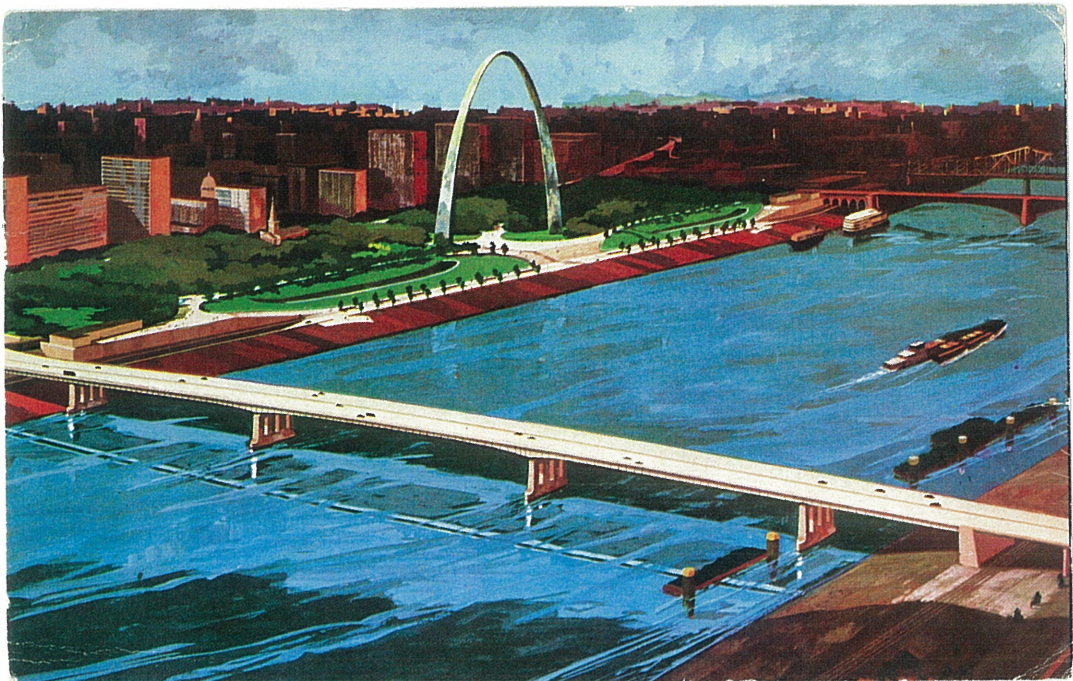
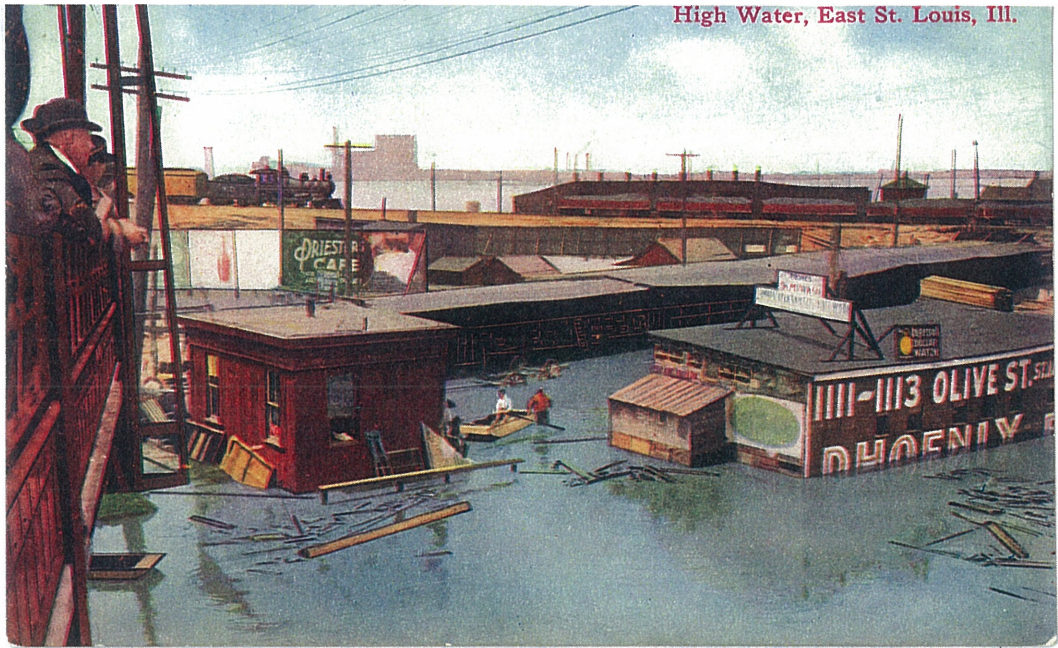
MUNICIPAL BRIDGE ACROSS MISSISSIPPI. FROM ST. LOUIS TO EAST ST. LOUIS, ILL.



8.—EADS BRIDGE ACROSS MISSISSIPPI FROM ST. LOUIS, MO., TO EAST ST. LOUIS, ILL.



High Water, East St. Louis, Ill.



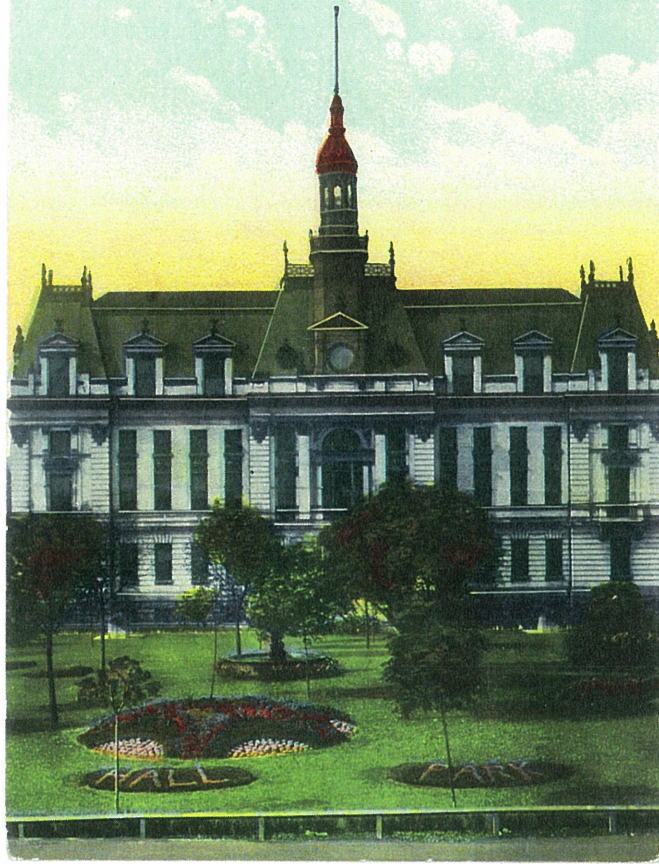


MISSOURI AVENUE, LOOKING EAST

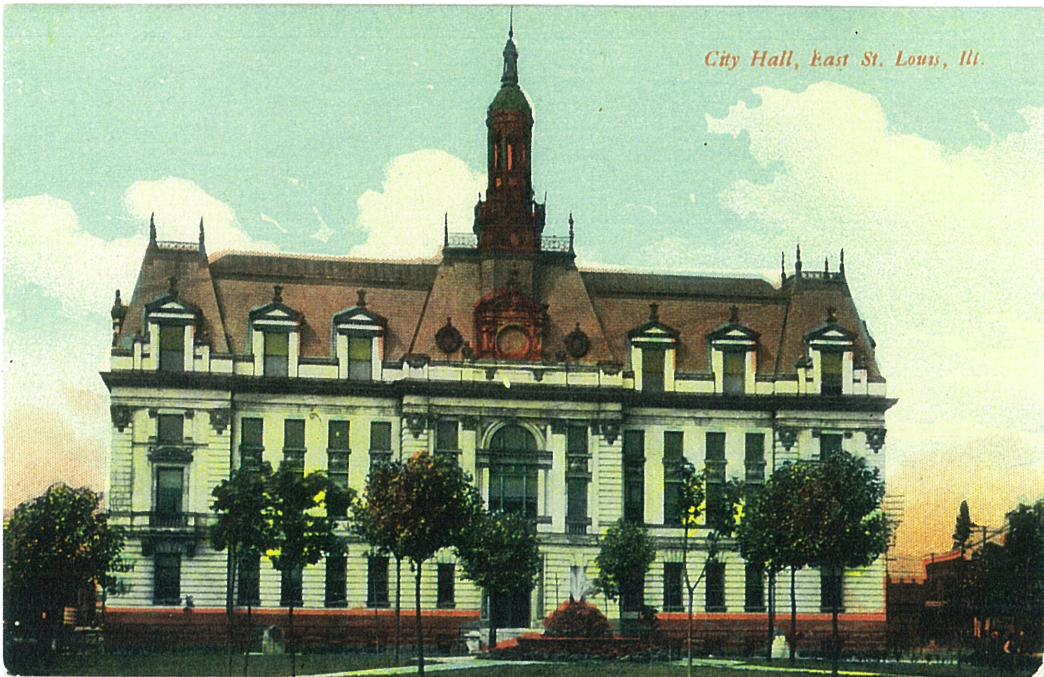


SPIVEY BUILDING

City Hall, East St. Louis, Ill.

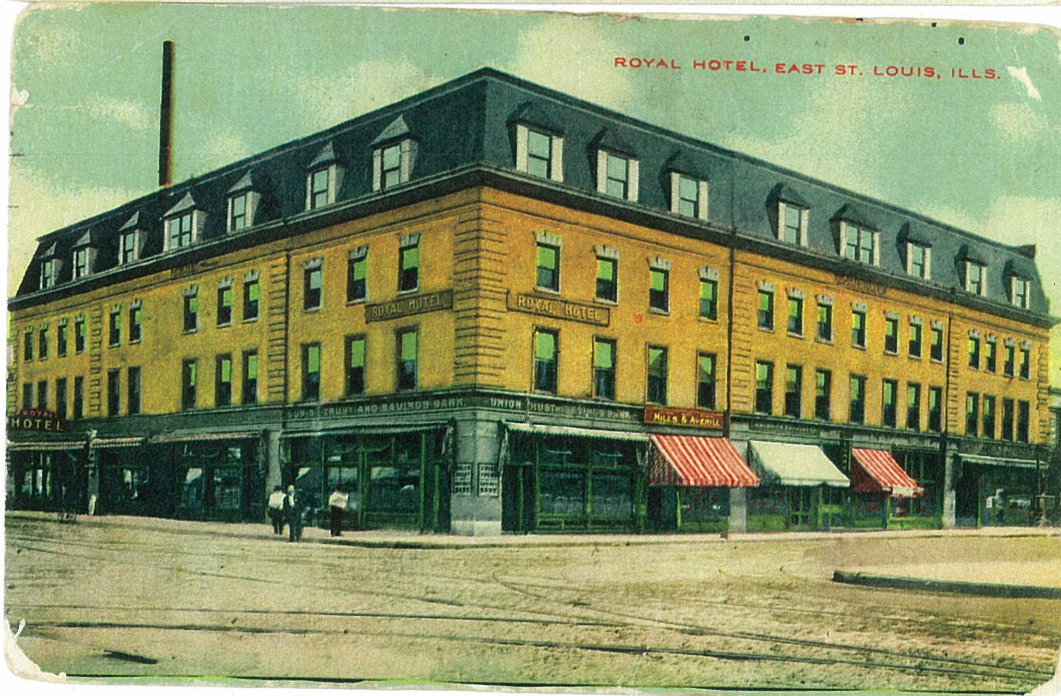


City Hall, East St. Louis, Ill.

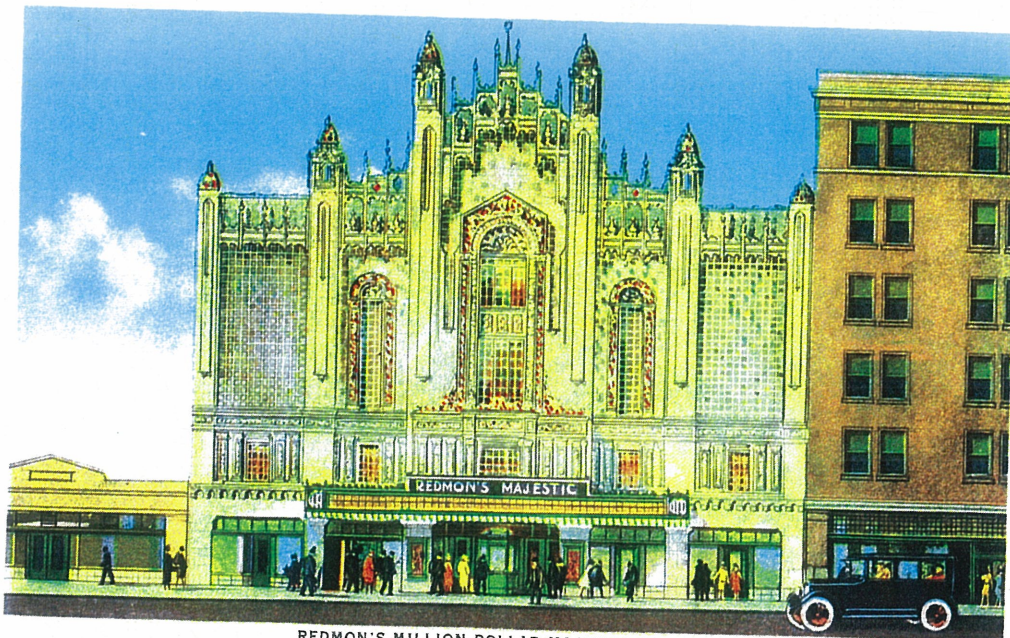




HOTEL ARNOLD, OPPOSITE CITY HALL PLAZA, EAST ST. LOUIS, ILL.



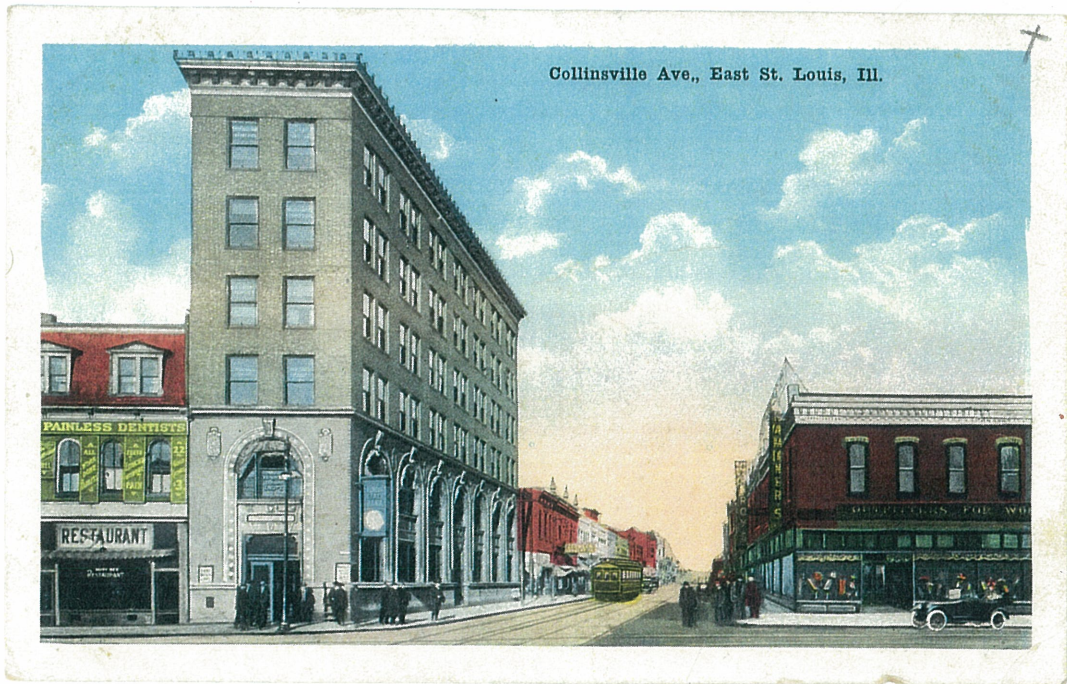
ROYAL HOTEL, EAST ST. LOUIS, ILLS.



REDMON'S MILLION DOLLAR MAJESTIC THEATRE



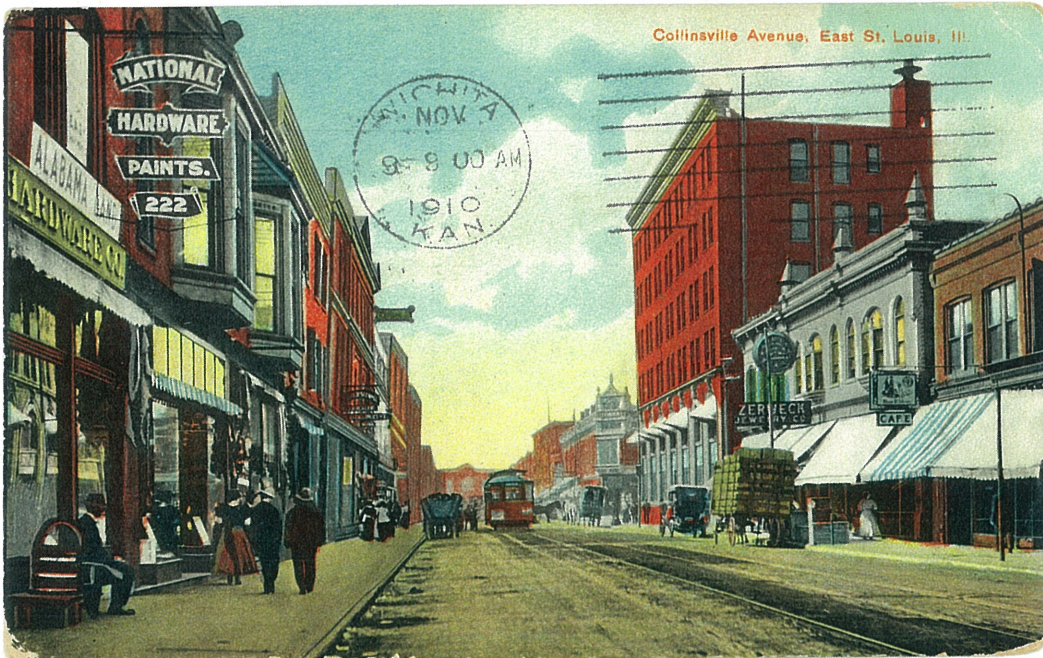
First National Bank Building, East St. Louis, Ill.





6

Pennsylvania Ave., Looking West, East St. Louis, Ill.

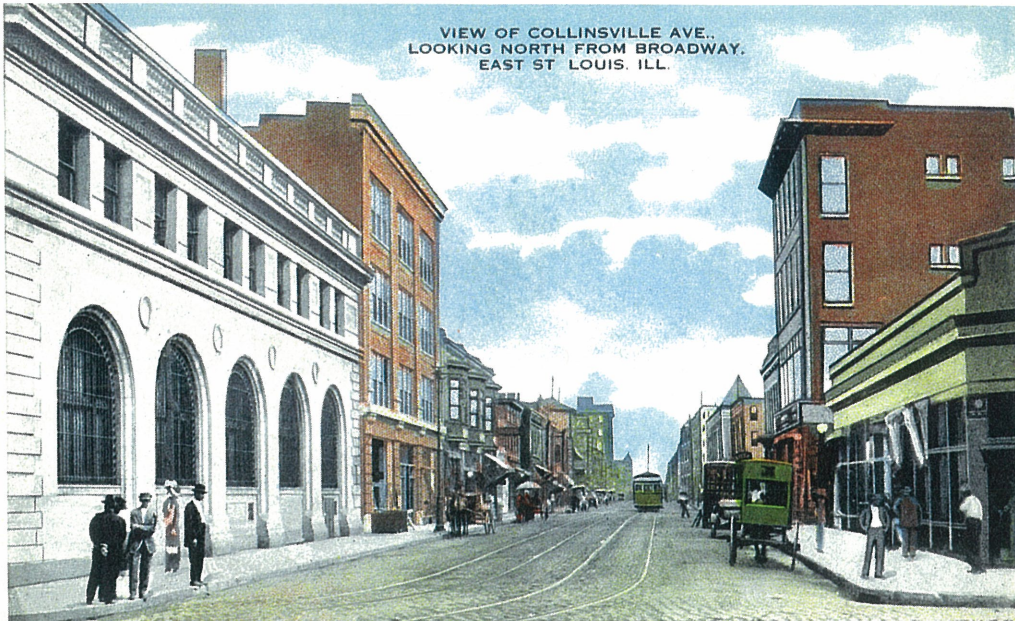


Collinsville Avenue, East St. Louis, Ill.

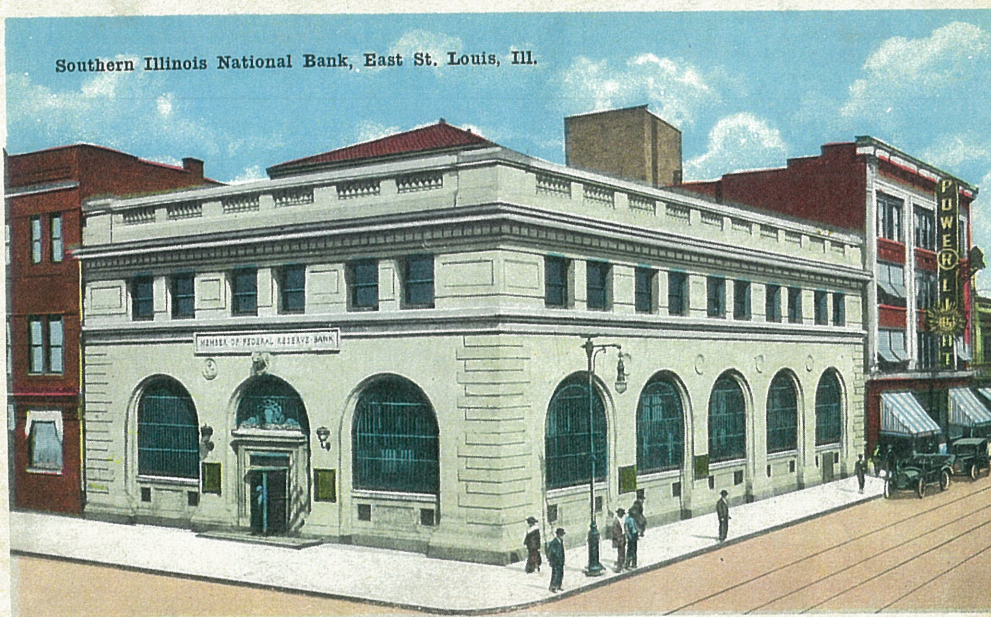


6676. Collinsville Ave., South from St. Louis Ave.,
E. St. Louis, Ill.

VIEW OF COLLINSVILLE AVE.,
LOOKING NORTH FROM BROADWAY,
EAST ST. LOUIS, ILL.



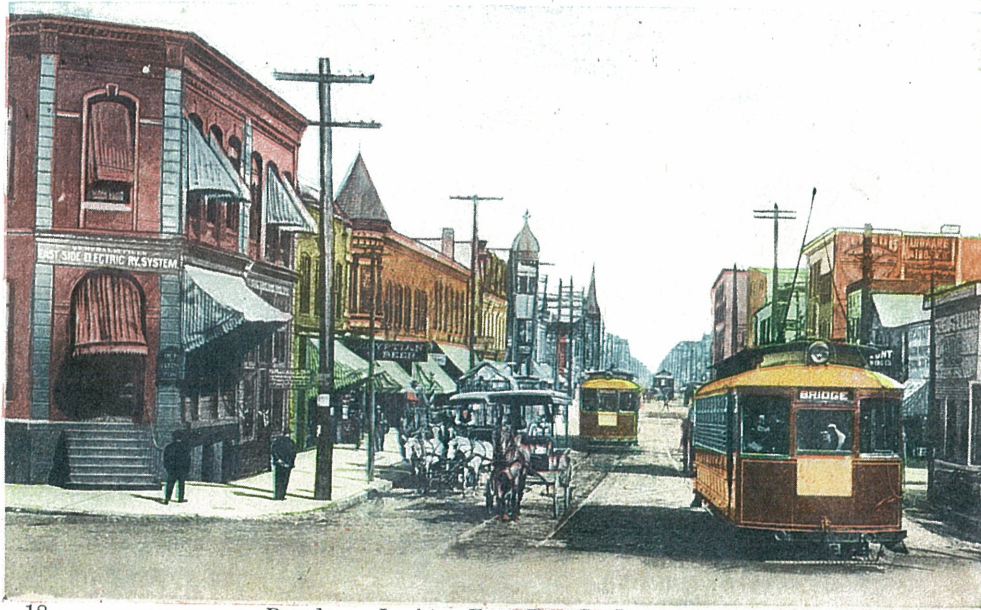
Southern Illinois National Bank, East St. Louis, Ill.





MURPHY BUILDING, EAST ST. LOUIS, ILL.

4331-29

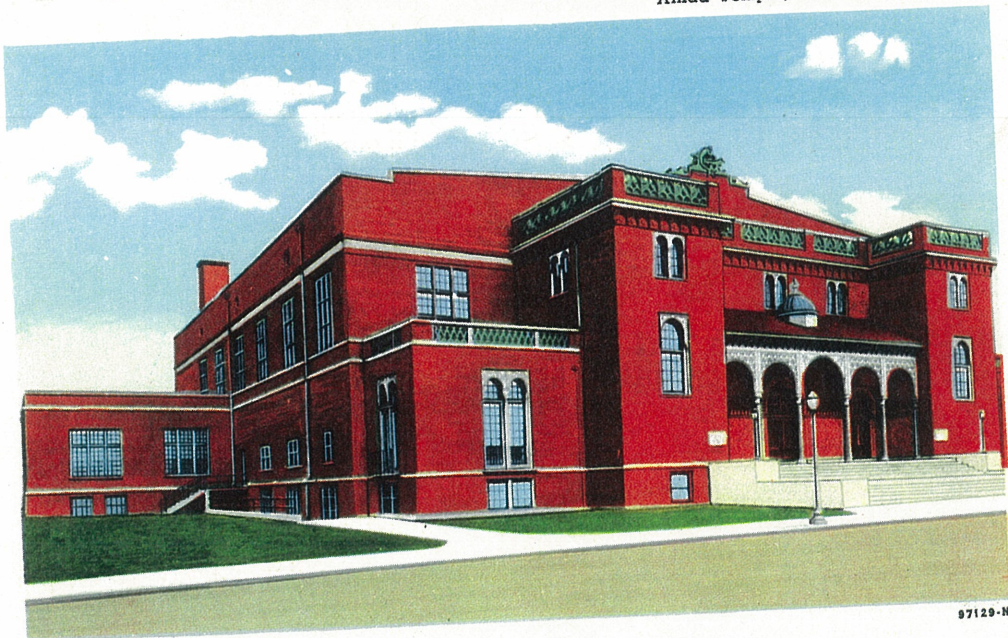


18

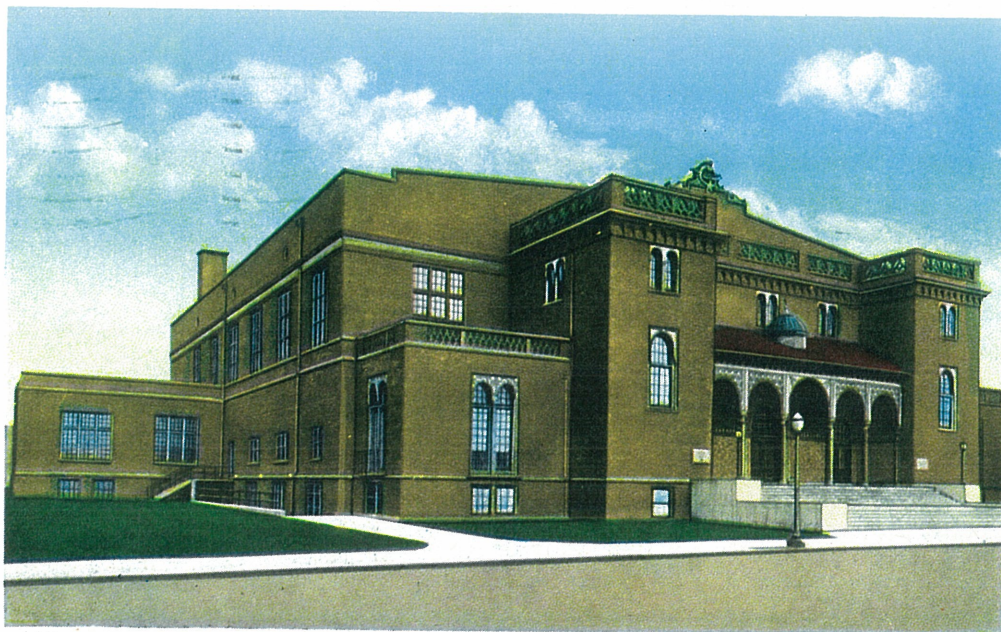
Broadway, Looking East, East St. Louis, Ill.



Ainad Temple, East St. Louis, Ill.



97129-N



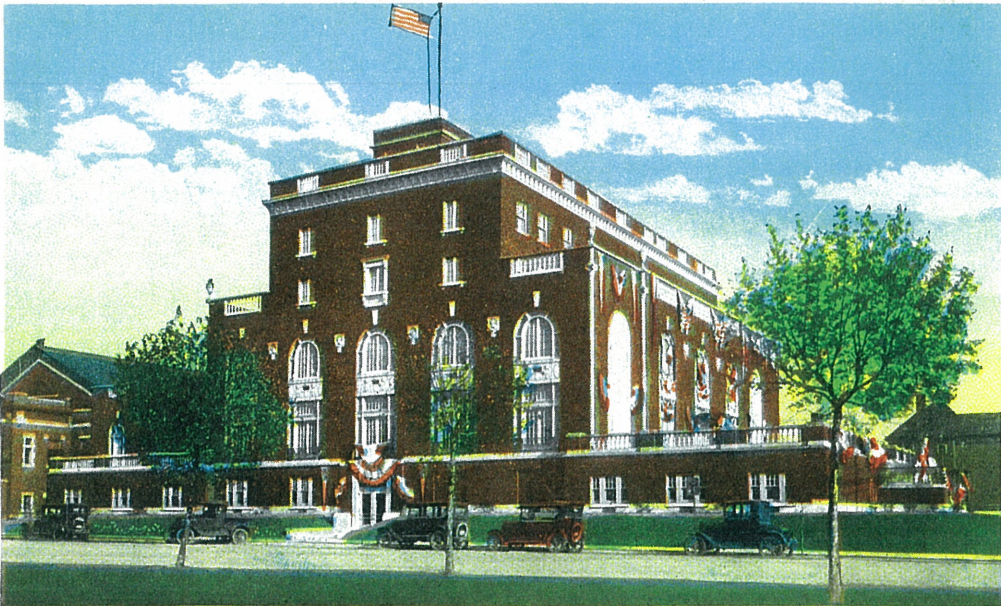
AINAD TEMPLE, EAST ST. LOUIS, ILL

97129



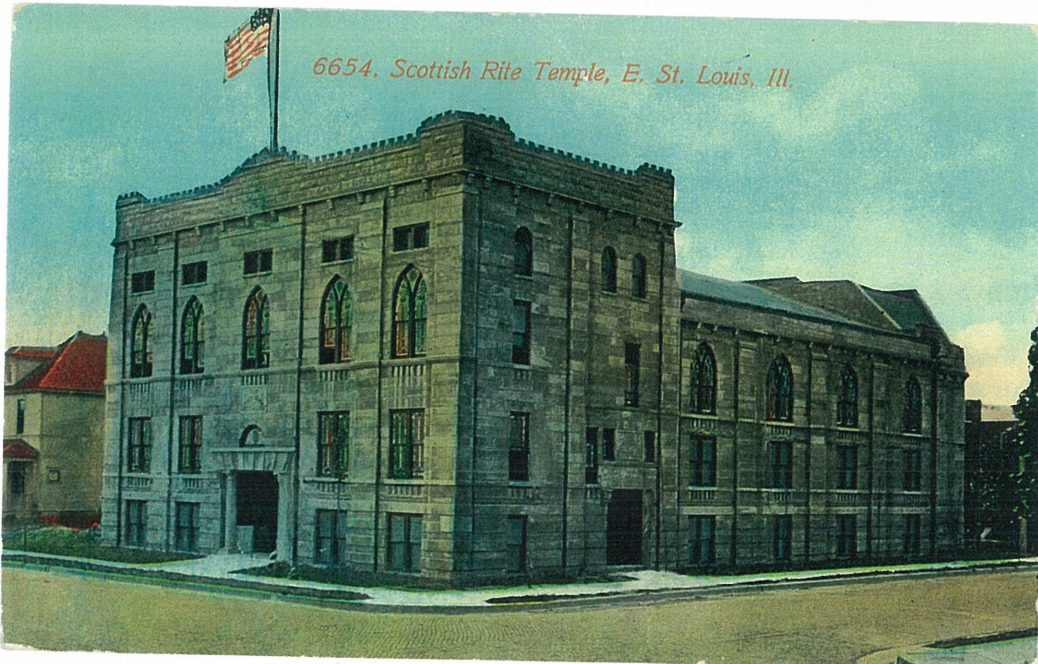
KURRUS FUNERAL HOME, EAST ST. LOUIS, ILL.

1321-29-N



KNIGHTS OF COLUMBUS BUILDING, EAST ST. LOUIS, ILL.

109798

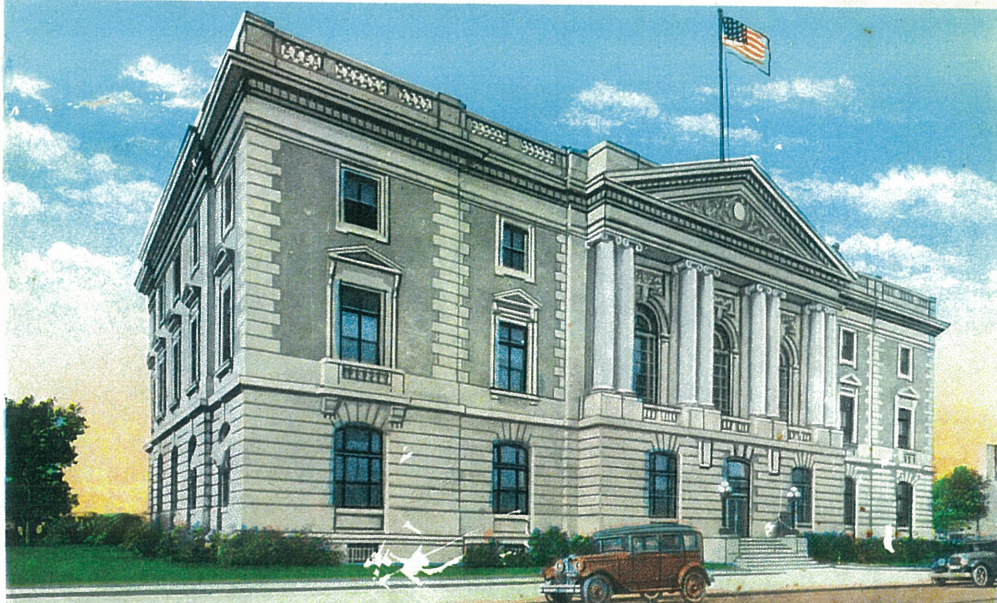




FEDERAL BUILDING IN GALA ATTIRE
CELEBRATION at EAST ST. LOUIS ILL. Oct. 25, 1909.
BY H. H. BREGSTONE 1520 - 1522 CASS AV. ST. LOUIS.



FEDERAL BUILDING IN GALA ATTIRE
CELEBRATION at EAST ST. LOUIS ILL. Oct. 25, 1909.
BY H. H. BREGSTONE 1520 - 1522 CASS AV. ST. LOUIS.

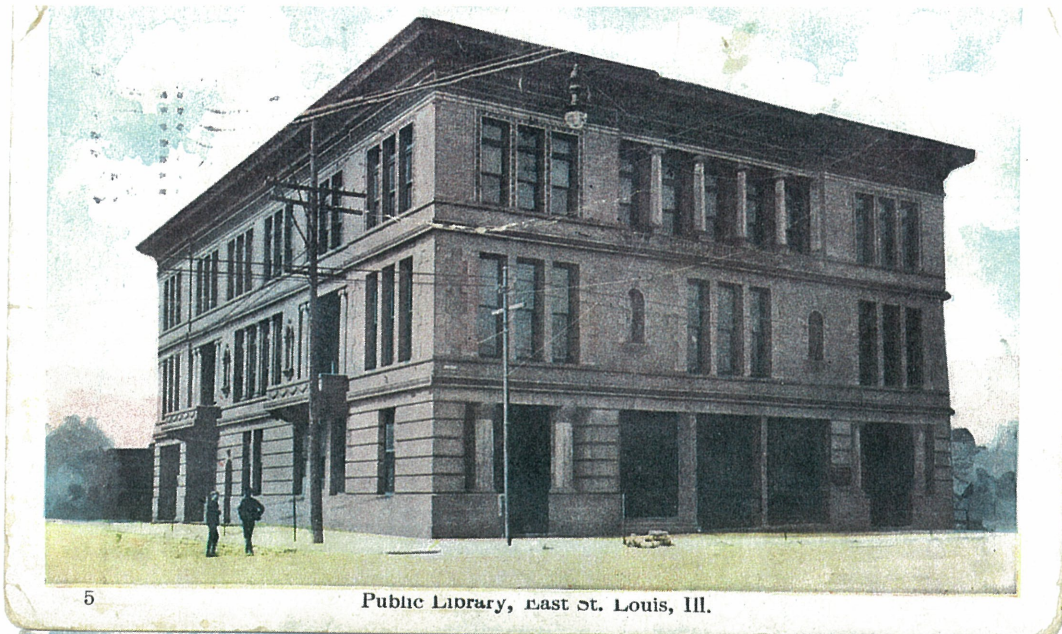


FEDERAL BUILDING AND POST OFFICE, EAST ST. LOUIS, ILL.



Hotel Broadview, East St. Louis, Illinois



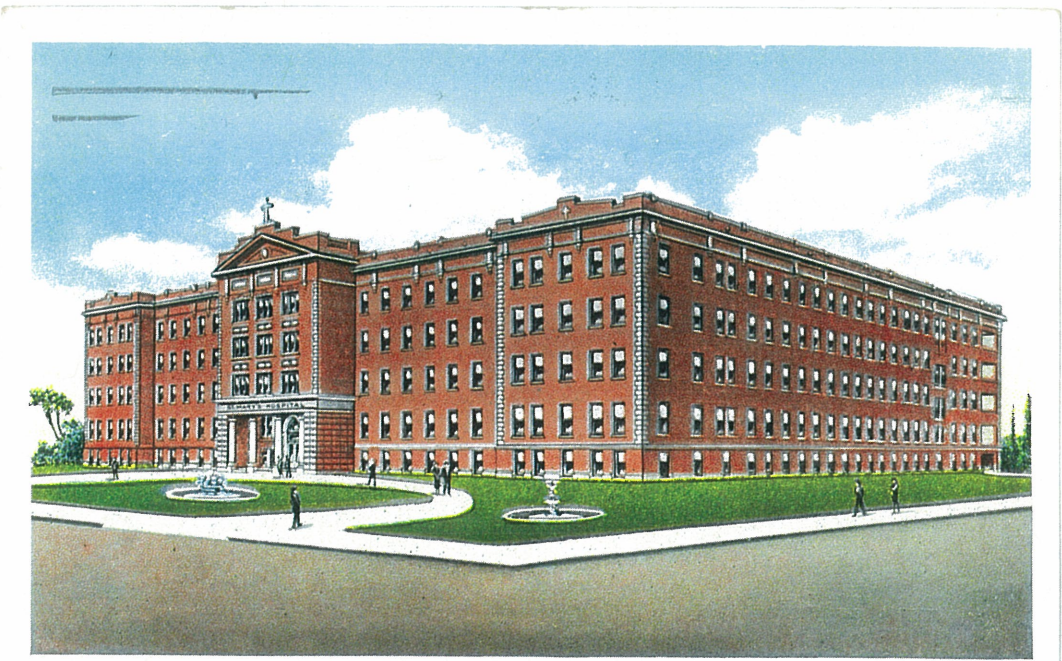


5

Public Library, East St. Louis, Ill.



Elks Club, E. St. Louis, Ill.



ST. MARY'S HOSPITAL, EAST ST. LOUIS, ILL.

103112



ST. ELIZABETH'S CHURCH AND SCHOOL, EAST ST. LOUIS, ILL.

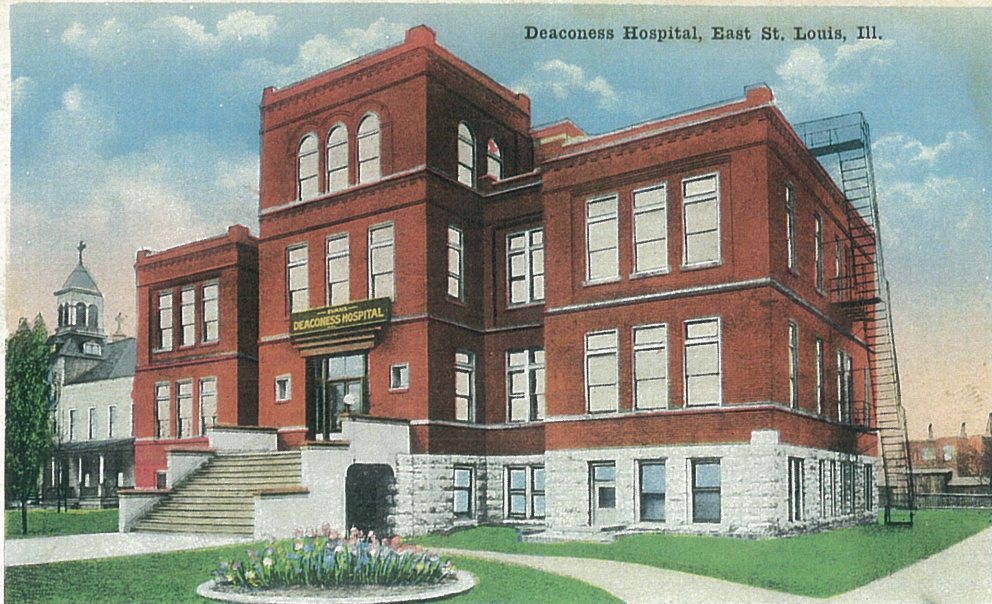
3A-H728

St. Teresa's Academy and St. Elizabeth's Church, East St. Louis, Illinois



3A-H727

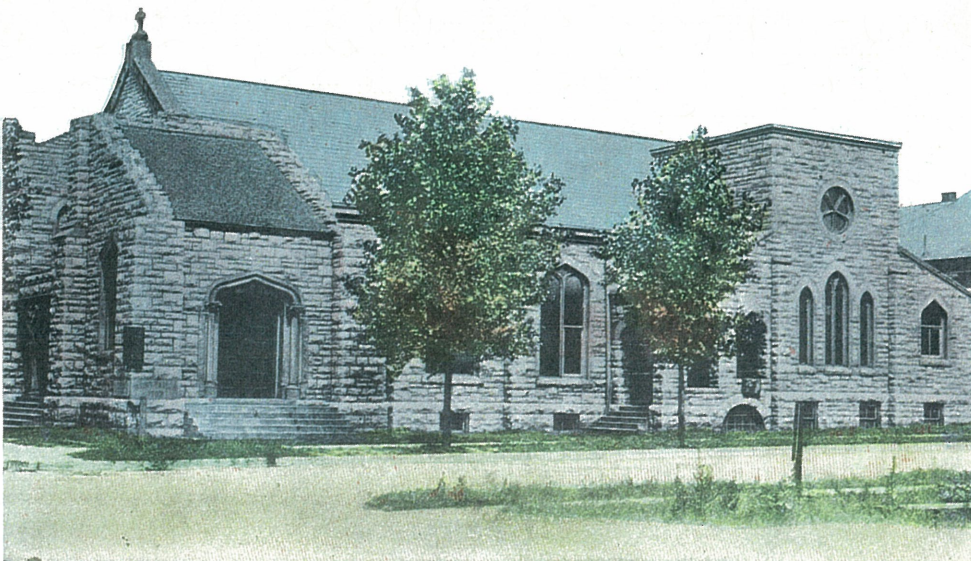
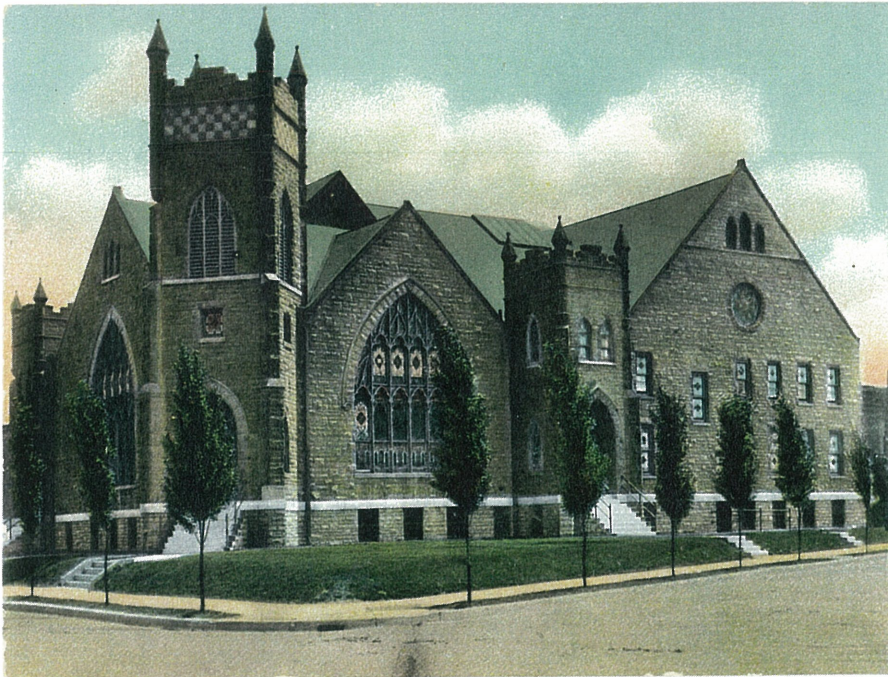
Deaconess Hospital, East St. Louis, Ill.



6655. Baptist Church, E. St. Louis. Ill.

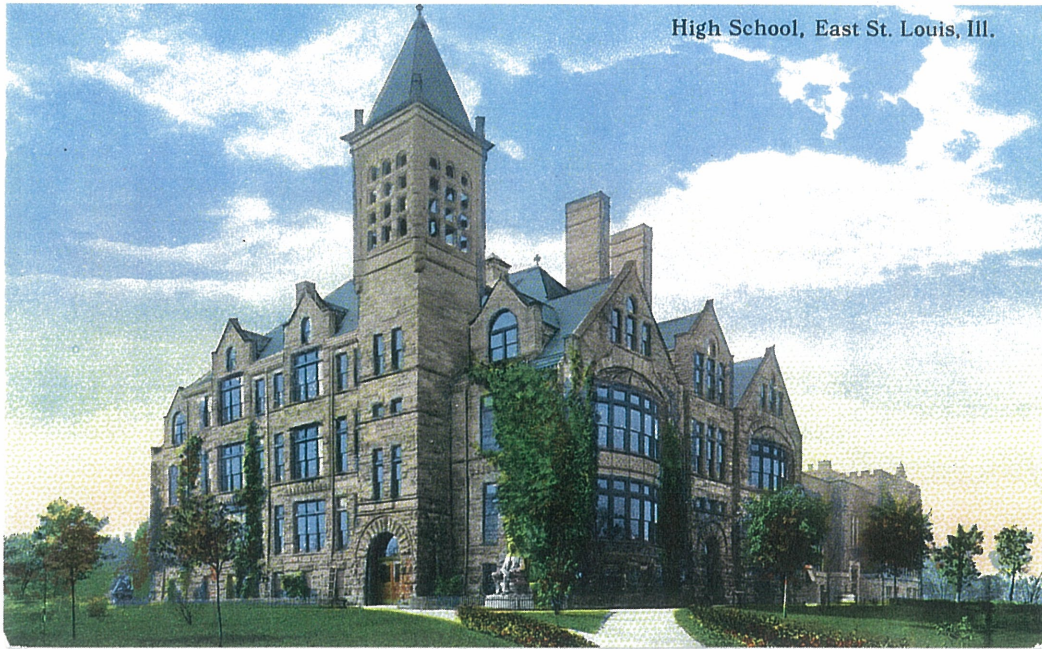


First M. E.
Church, East
St. Louis, Ill.

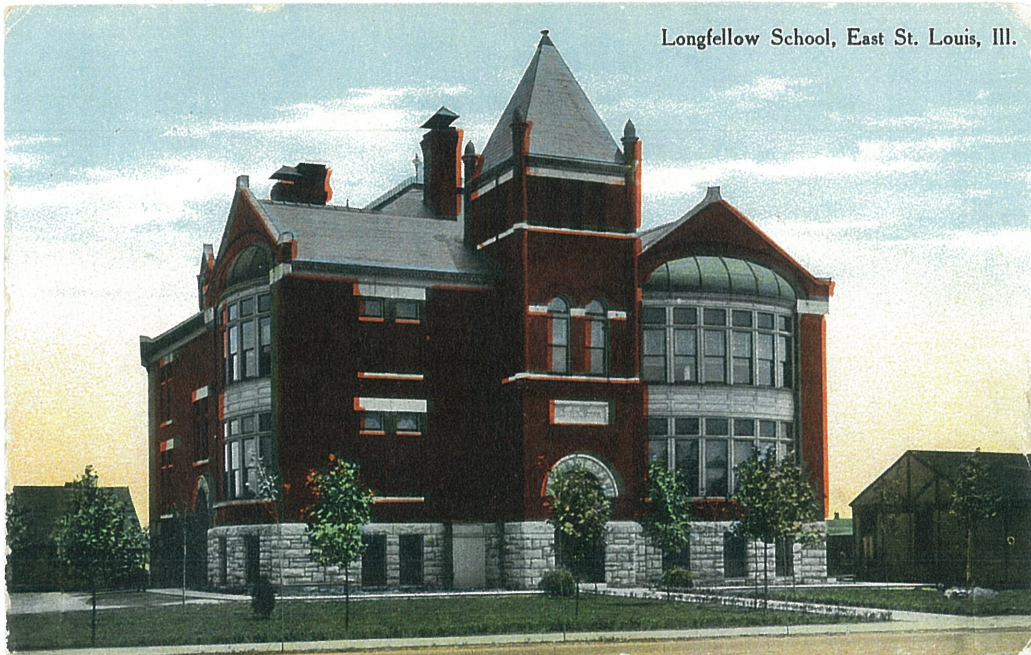


St. Paul's Episcopal Church, East St. Louis, Ill.

High School, East St. Louis, Ill.



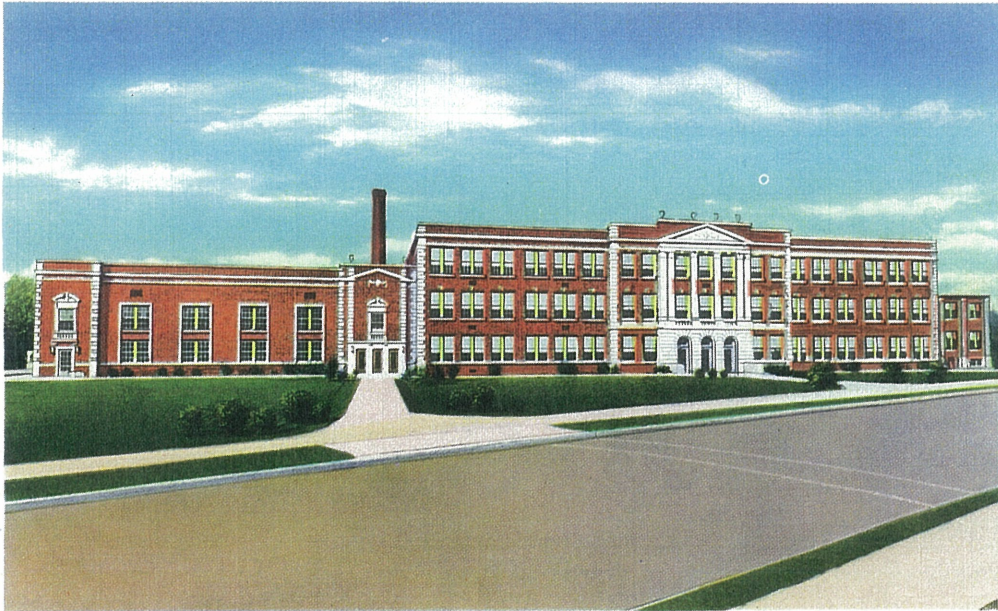
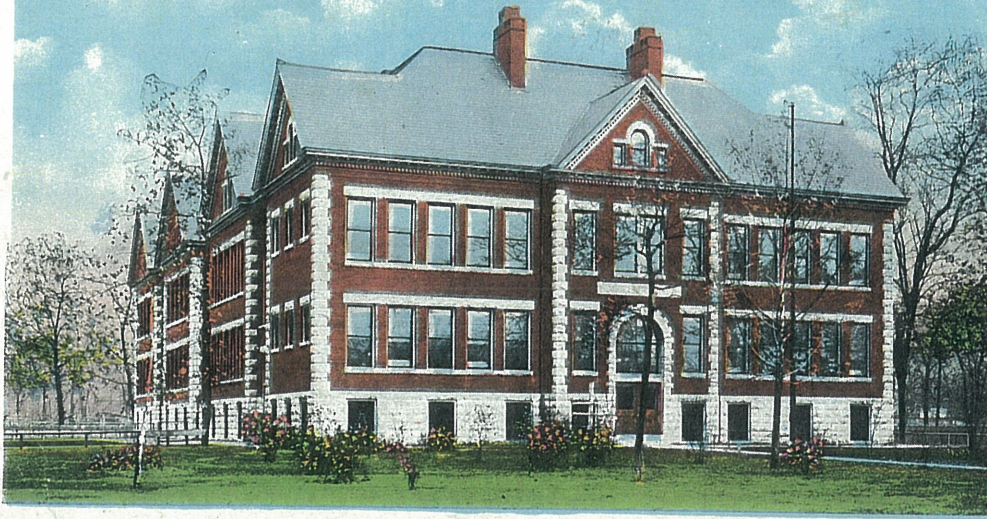
Longfellow School, East St. Louis, Ill.



WEBSTER SCHOOL, EAST ST. LOUIS, ILL.



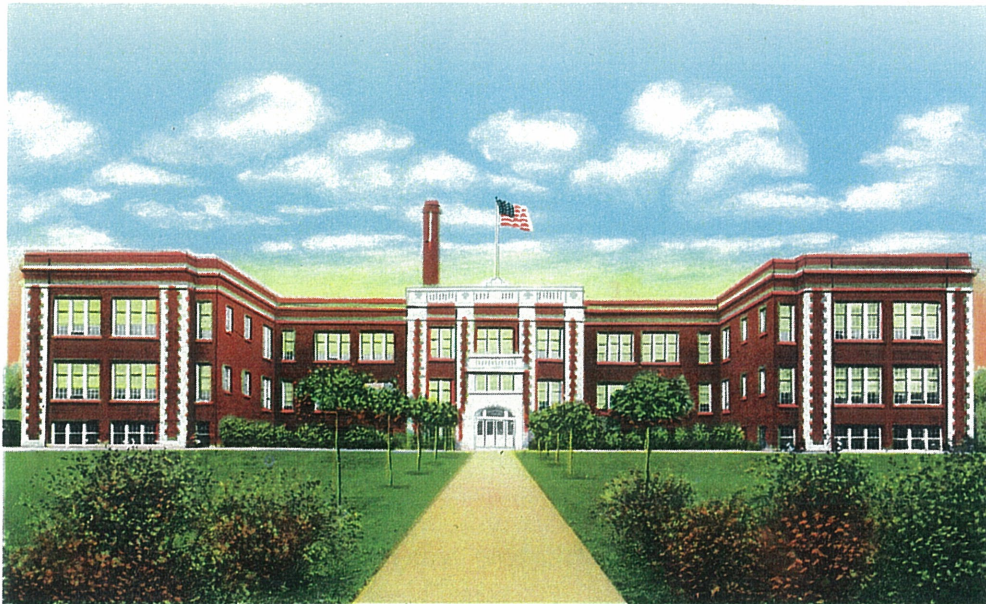
Jefferson School, East St. Louis, Ill.



LANSDOWNE JUNIOR HIGH SCHOOL, EAST ST. LOUIS, ILL.

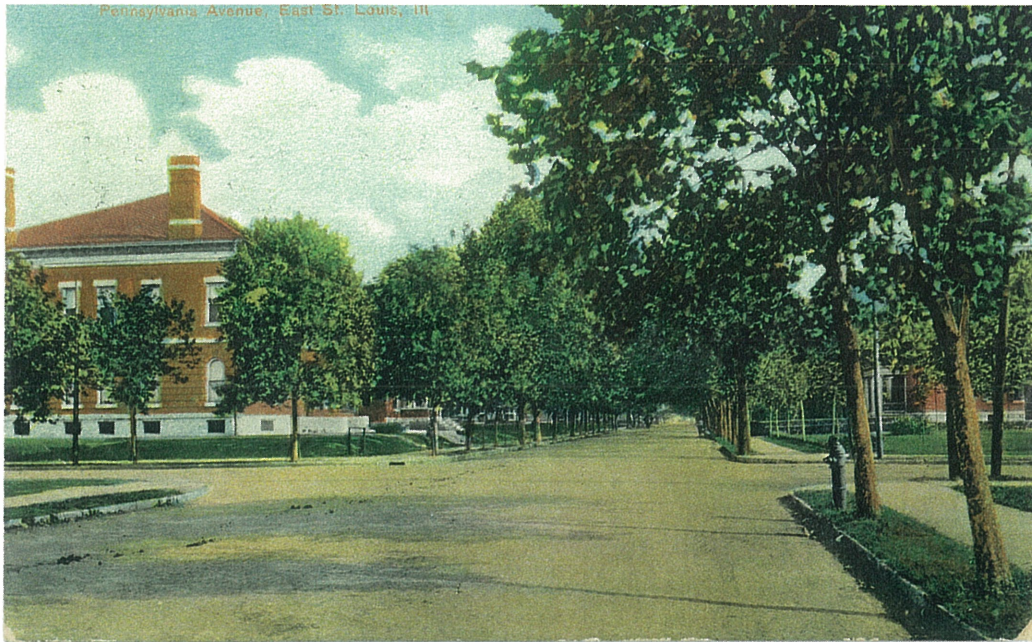
4A-H1993

Hawthorne School, East St. Louis, Illinois

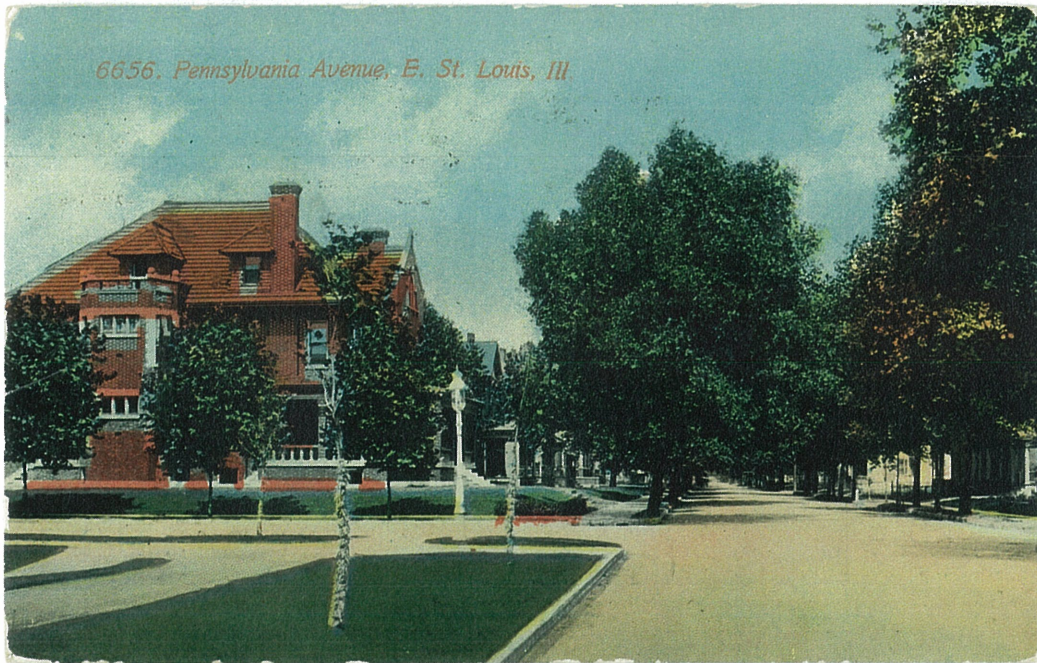


99319-N

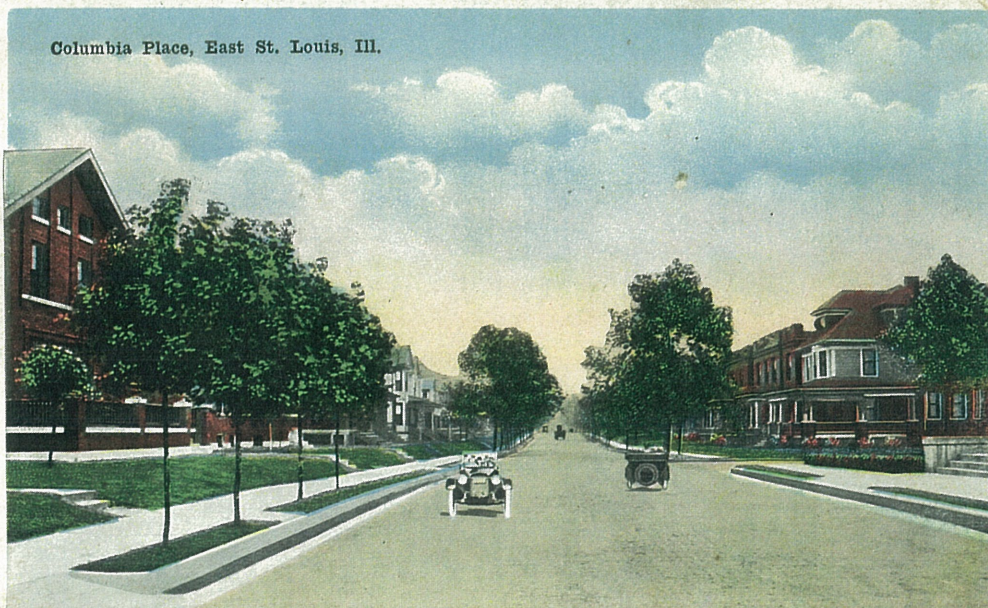
Pennsylvania Avenue, East St. Louis, Ill.



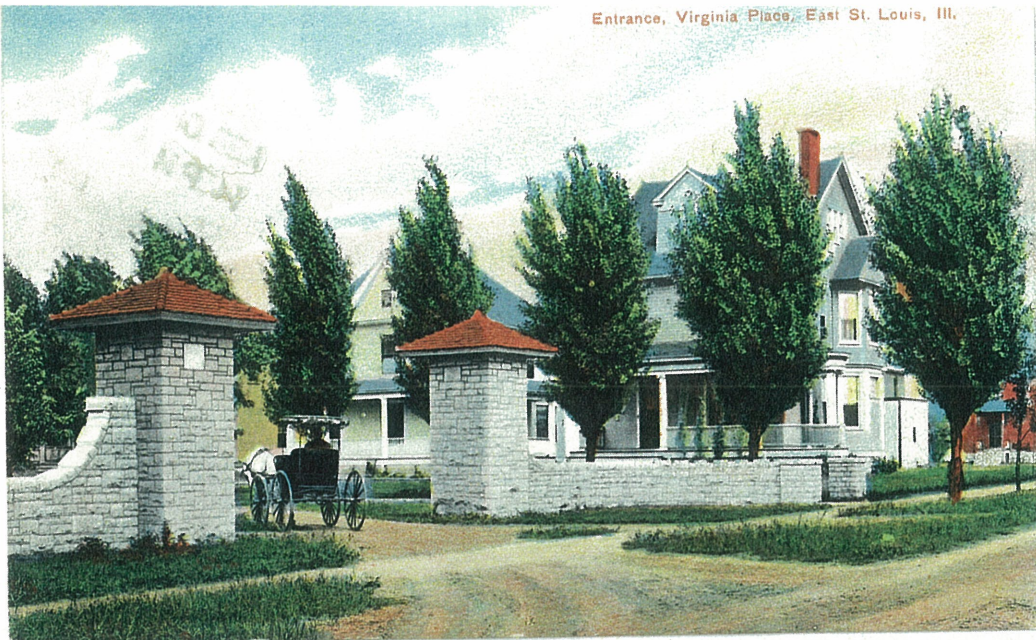
6656. Pennsylvania Avenue, E. St. Louis, Ill.



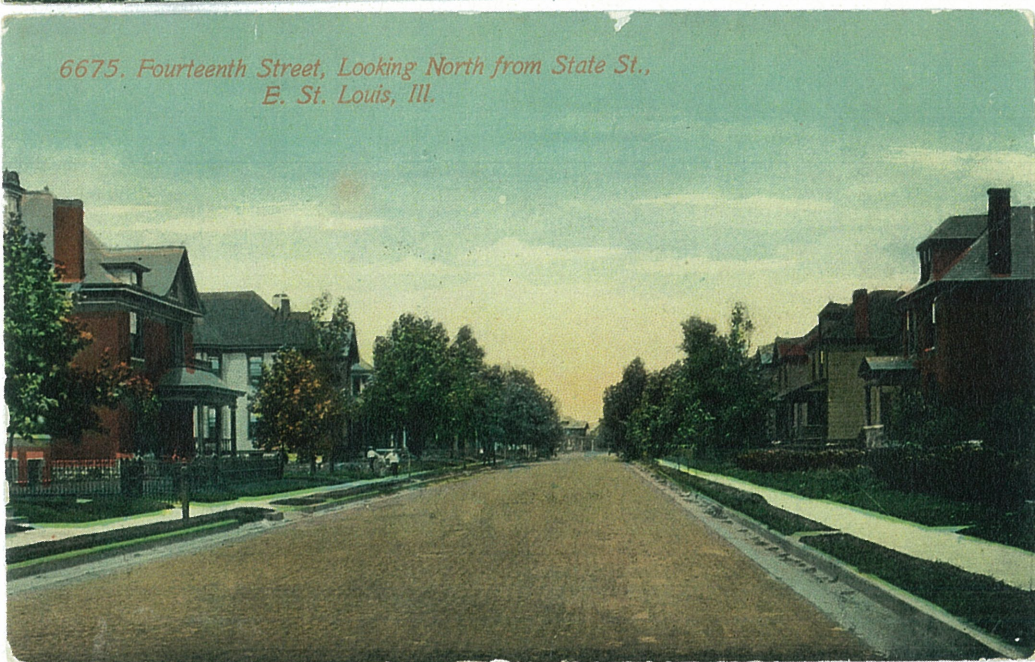
Columbia Place, East St. Louis, Ill.



Entrance, Virginia Place, East St. Louis, Ill.



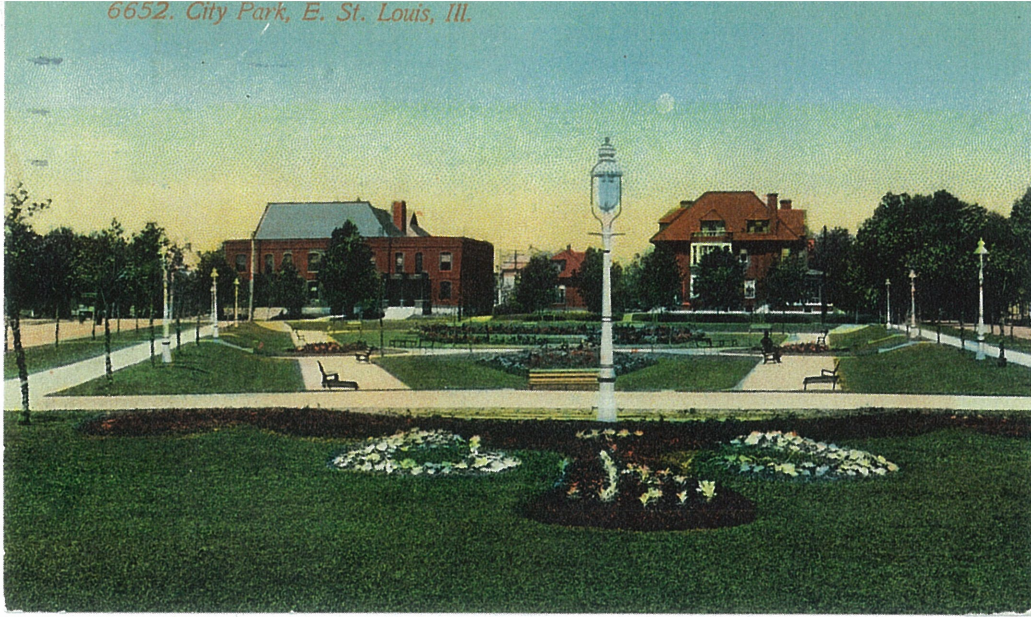
6675. Fourteenth Street, Looking North from State St.,
E. St. Louis, Ill.



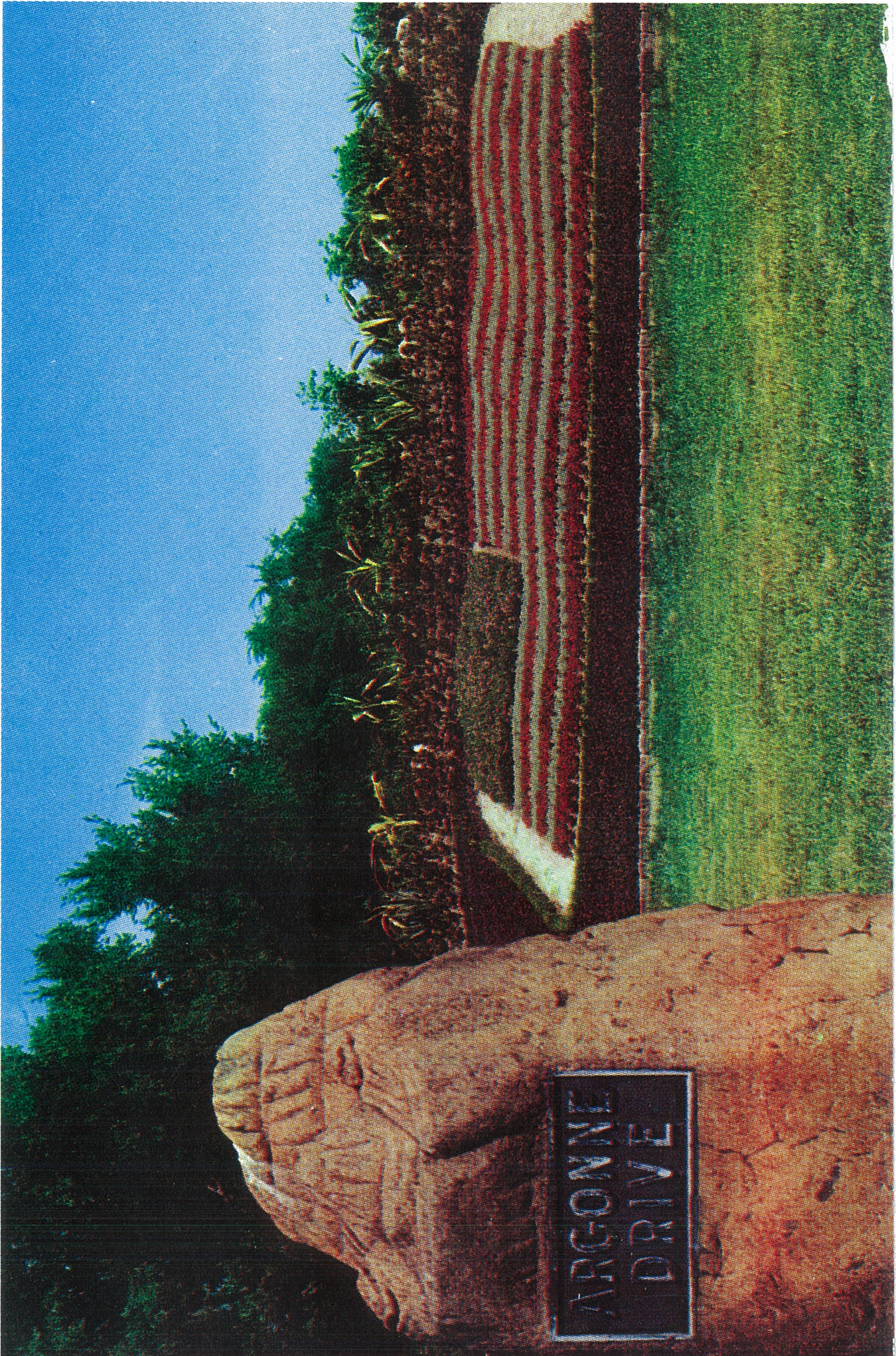
6657. Columbia Place, E. St. Louis, Ill.



6652. City Park, E. St. Louis, Ill.

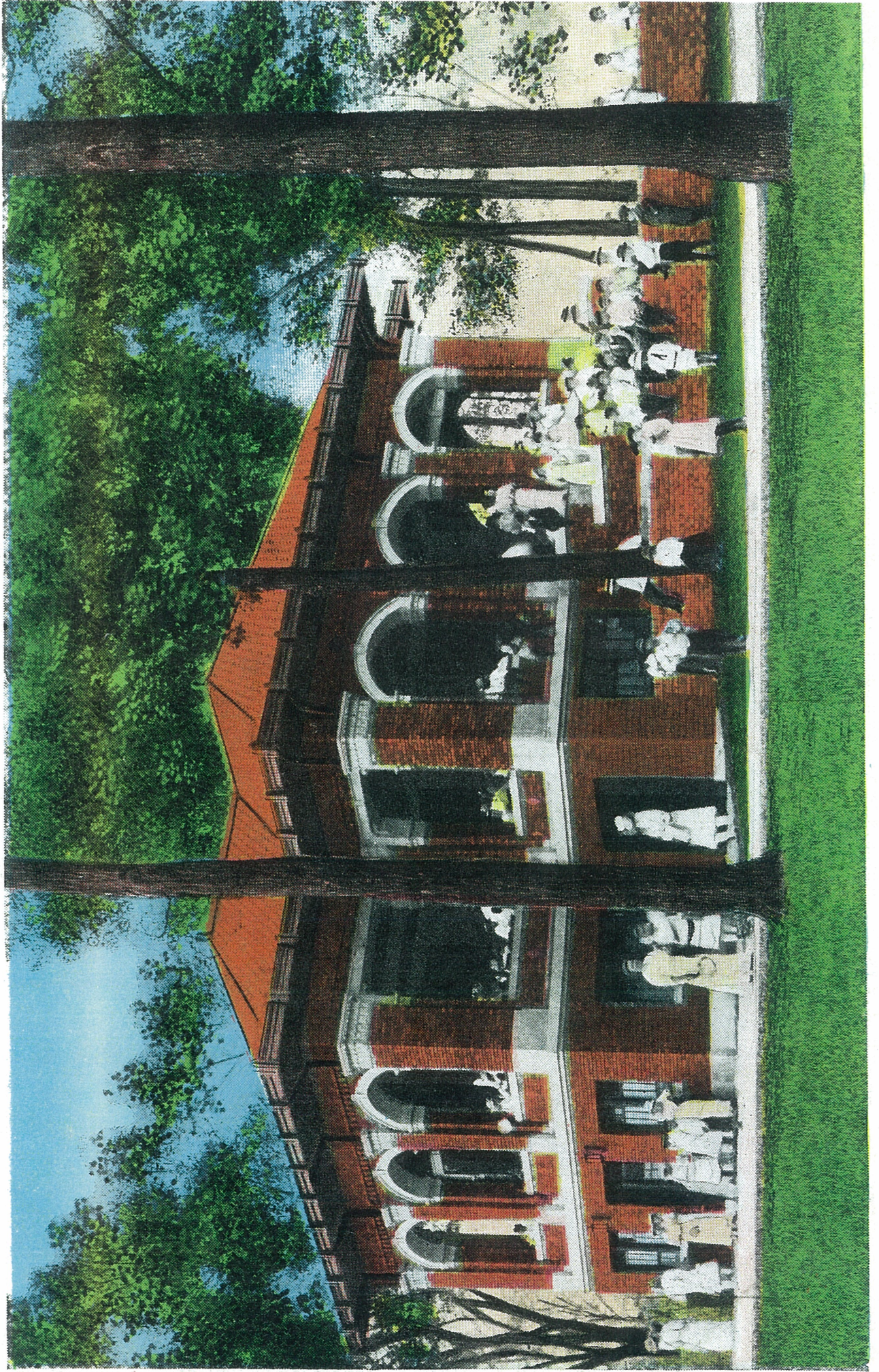


St. Louis Avenue, looking West from Sixteenth Street, East St. Louis, Ill.



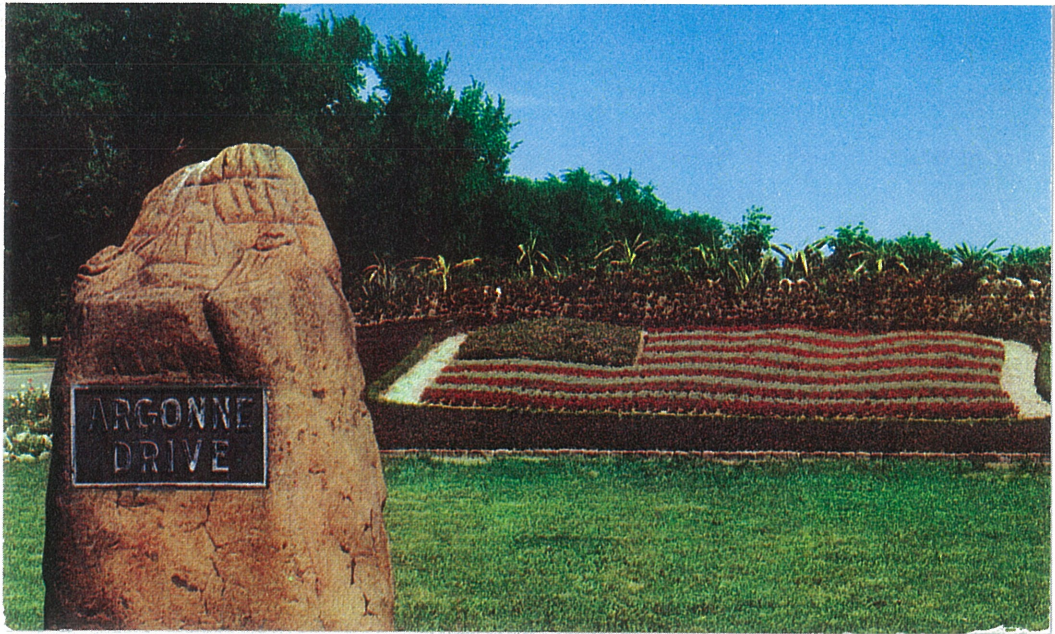
ARGONNE
DRIVE

Band Stand, Jones Park, East St. Louis, Ill.

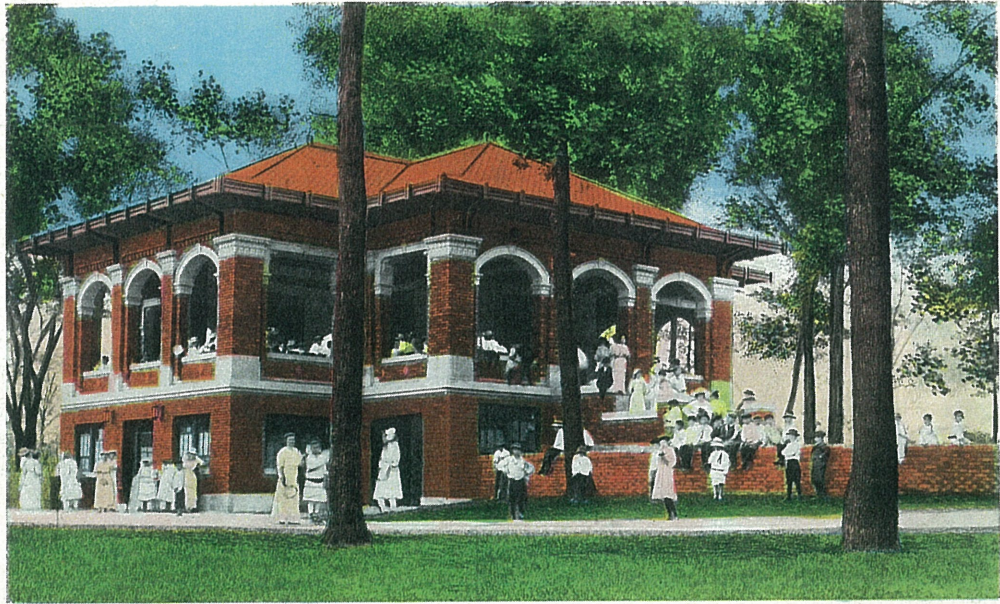


Bridge at Jones Park, East St. Louis, Illinois

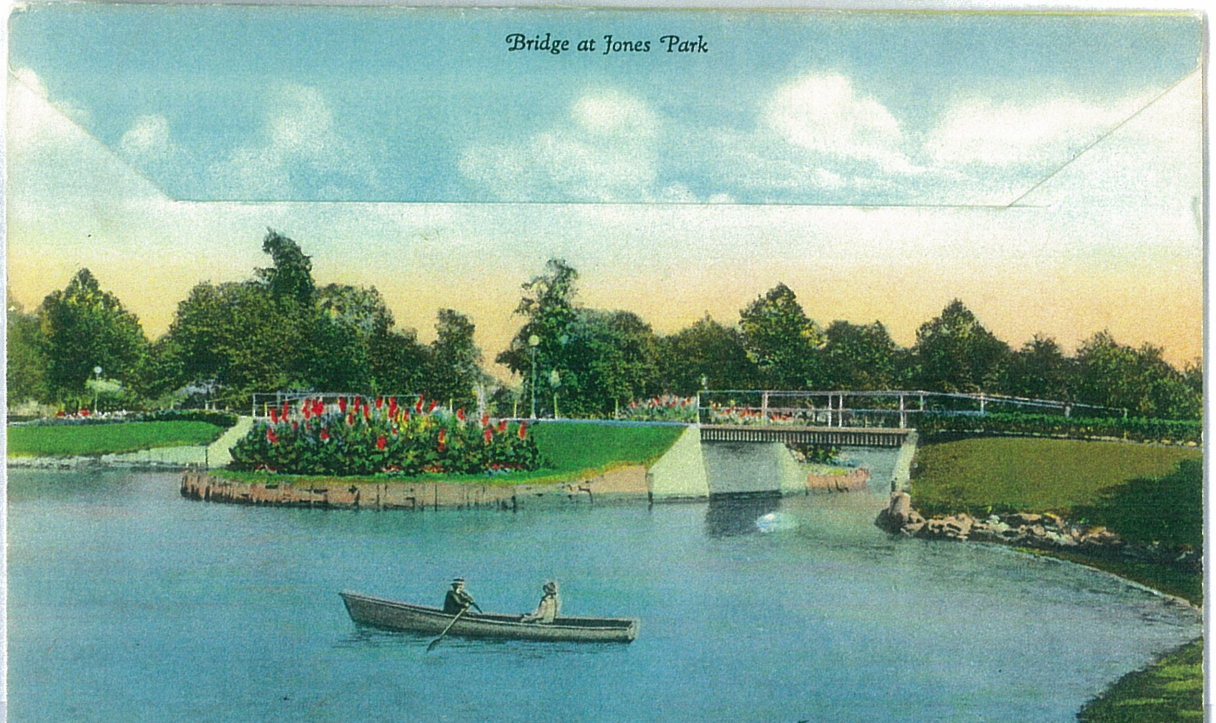




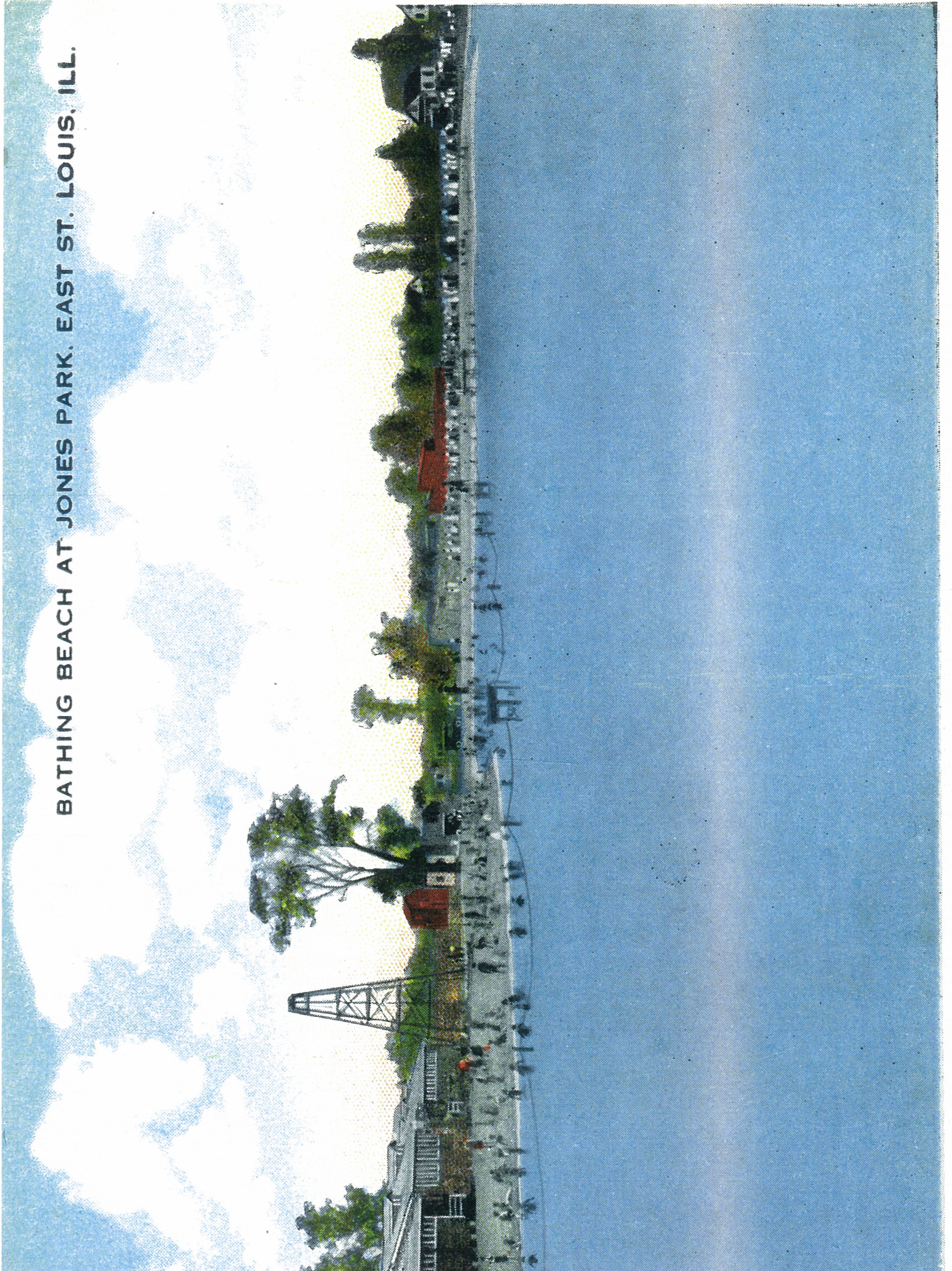
Band Stand, Jones Park, East St. Louis, Ill.



Bridge at Jones Park



BATHING BEACH AT JONES PARK. EAST ST. LOUIS, ILL.

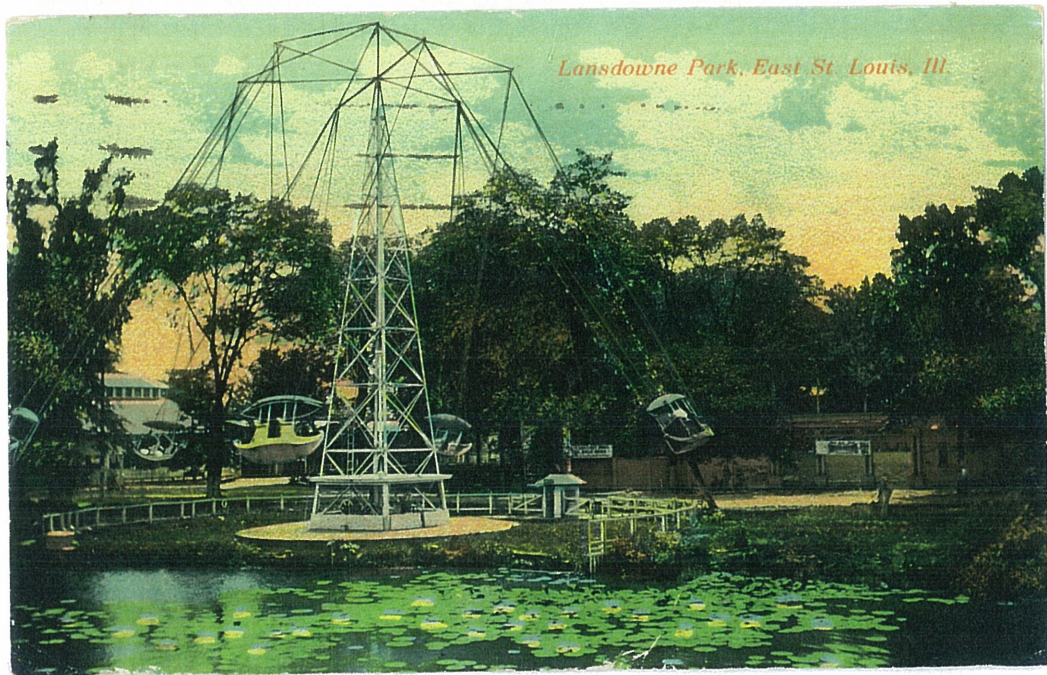




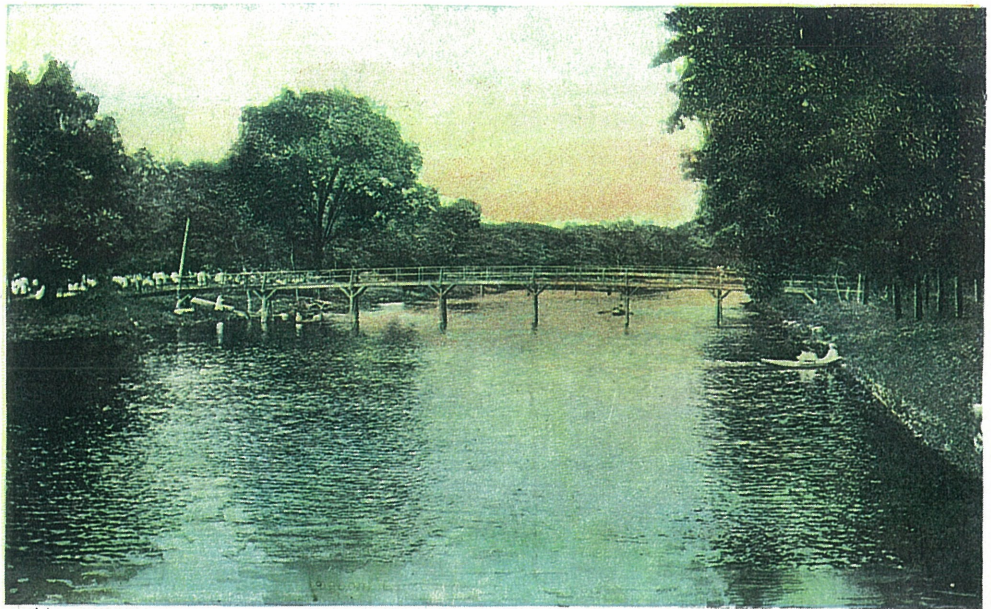
Fountain, Lansdowne, East St. Louis, Ill.



LAGOON. LANSDOWNE PARK. EAST ST. LOUIS. ILL.

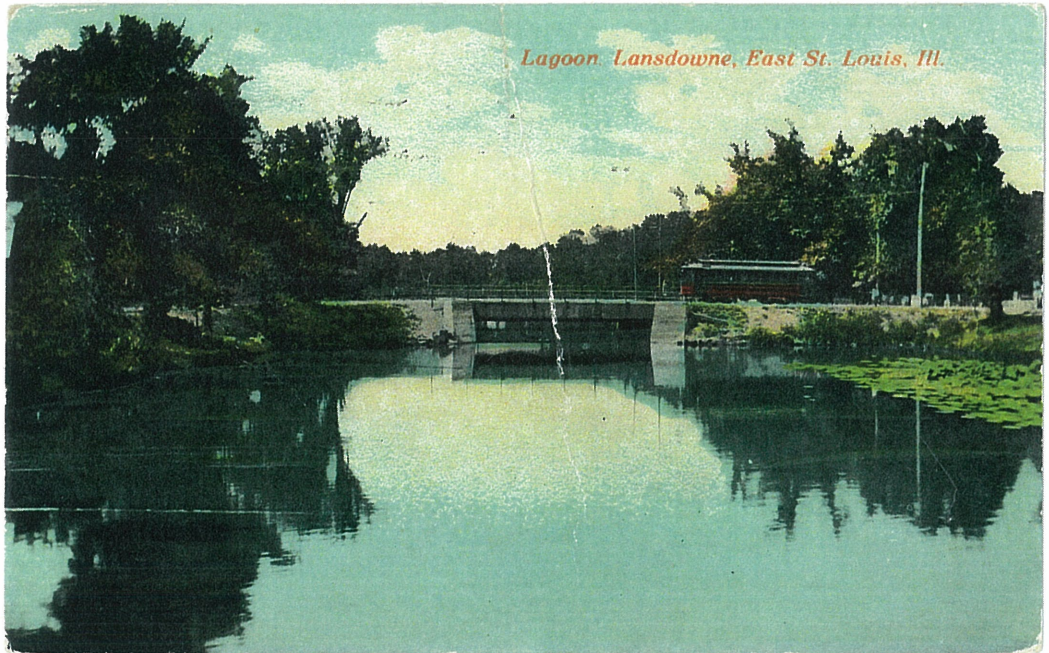


Lansdowne Park, East St. Louis, Ill.

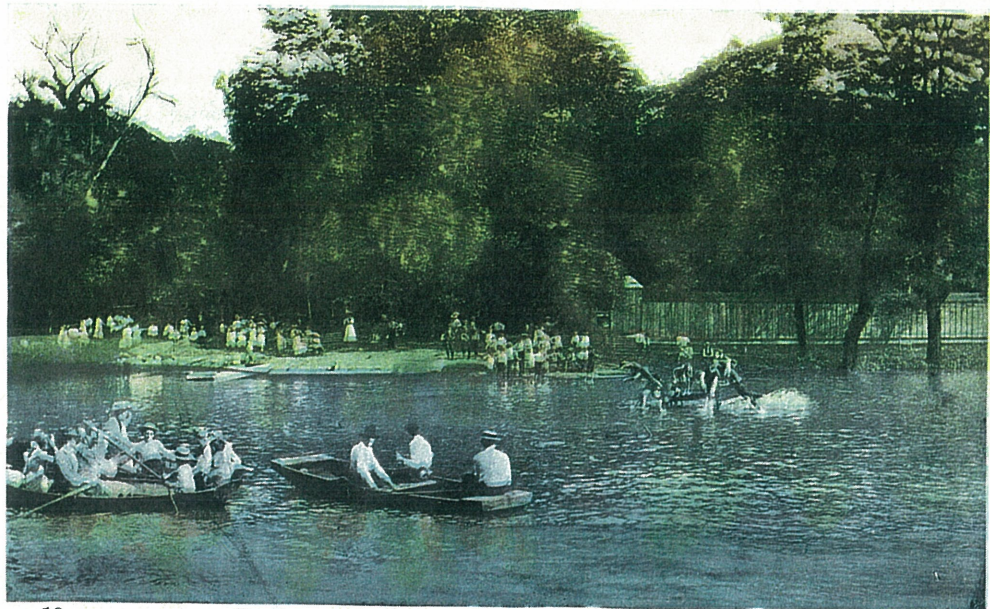


11

Lagoon Lansdown, East St. Louis, Ill.



Lagoon Lansdowne, East St. Louis, Ill.



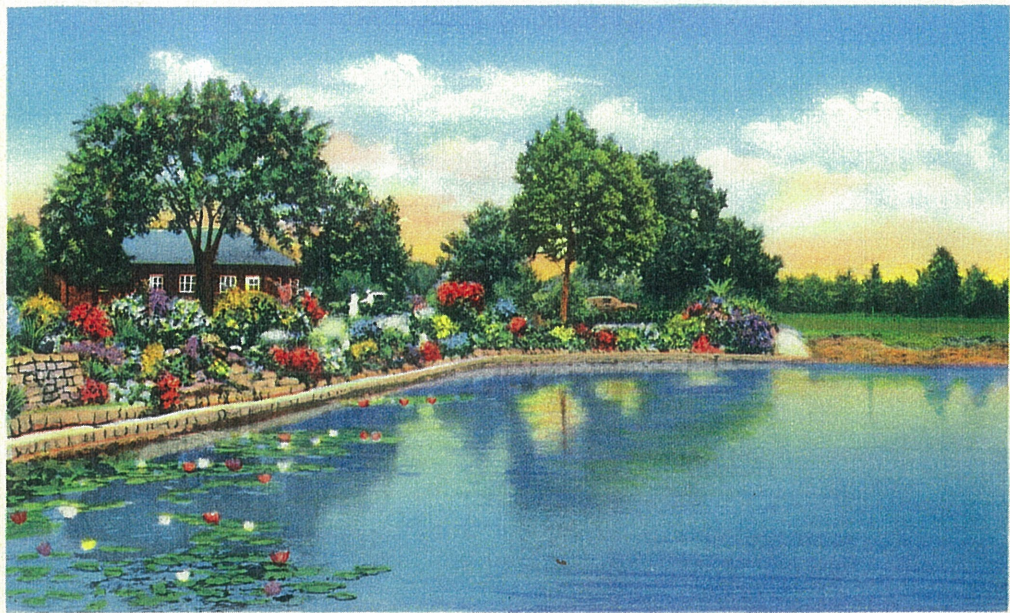
13

Boating on the Lagoon Lansdown, East St. Louis, Ill.

Lansdowne Park, East St. Louis, Ill.



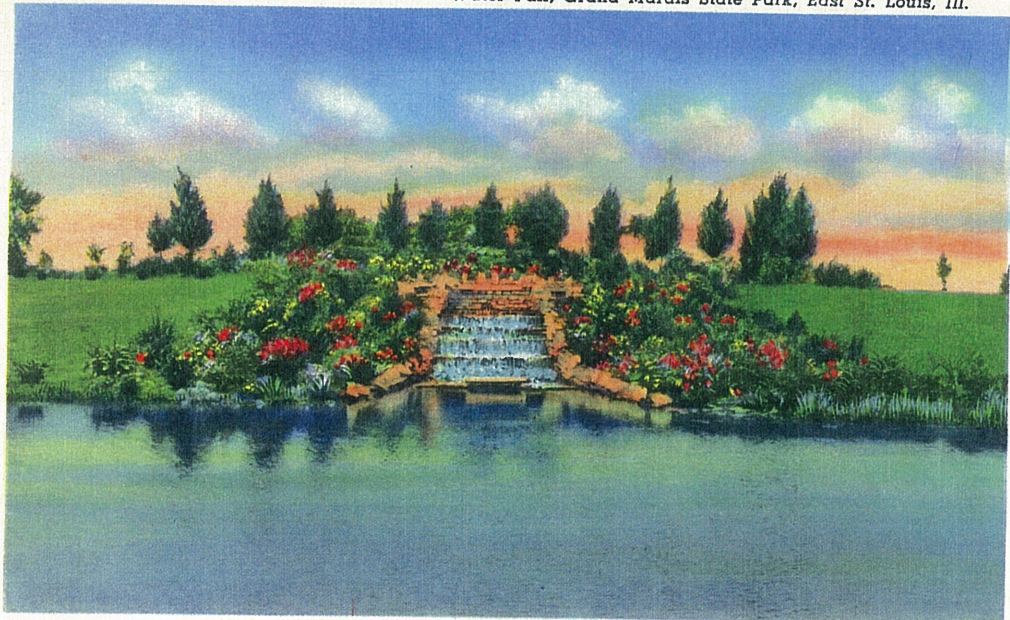
LANSDOWNE, EAST ST. LOUIS, ILL.



Fish Hatchery, Lake Park, East St. Louis, Ill.

9A-H1782

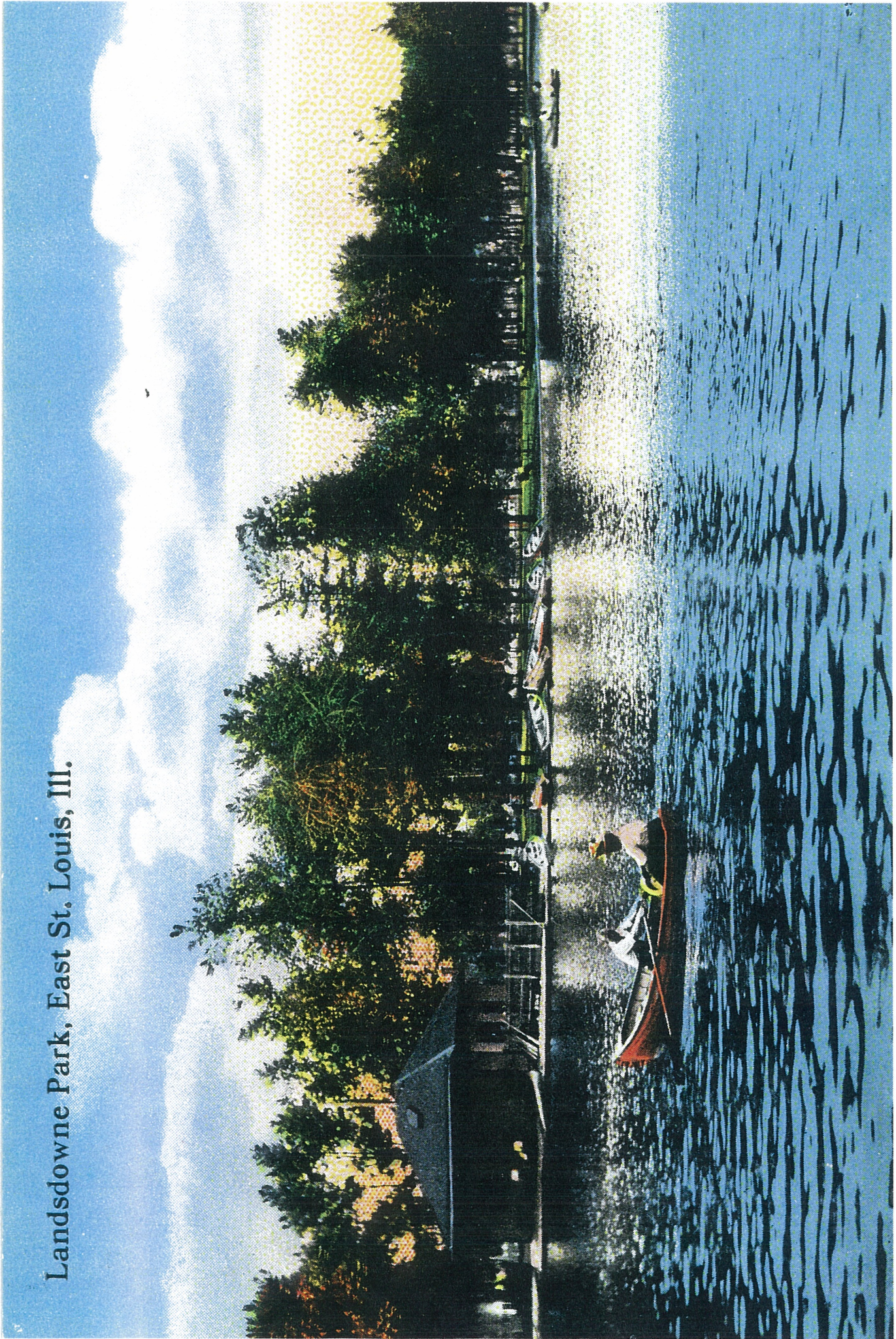
Water Fall, Grand Marais State Park, East St. Louis, Ill.

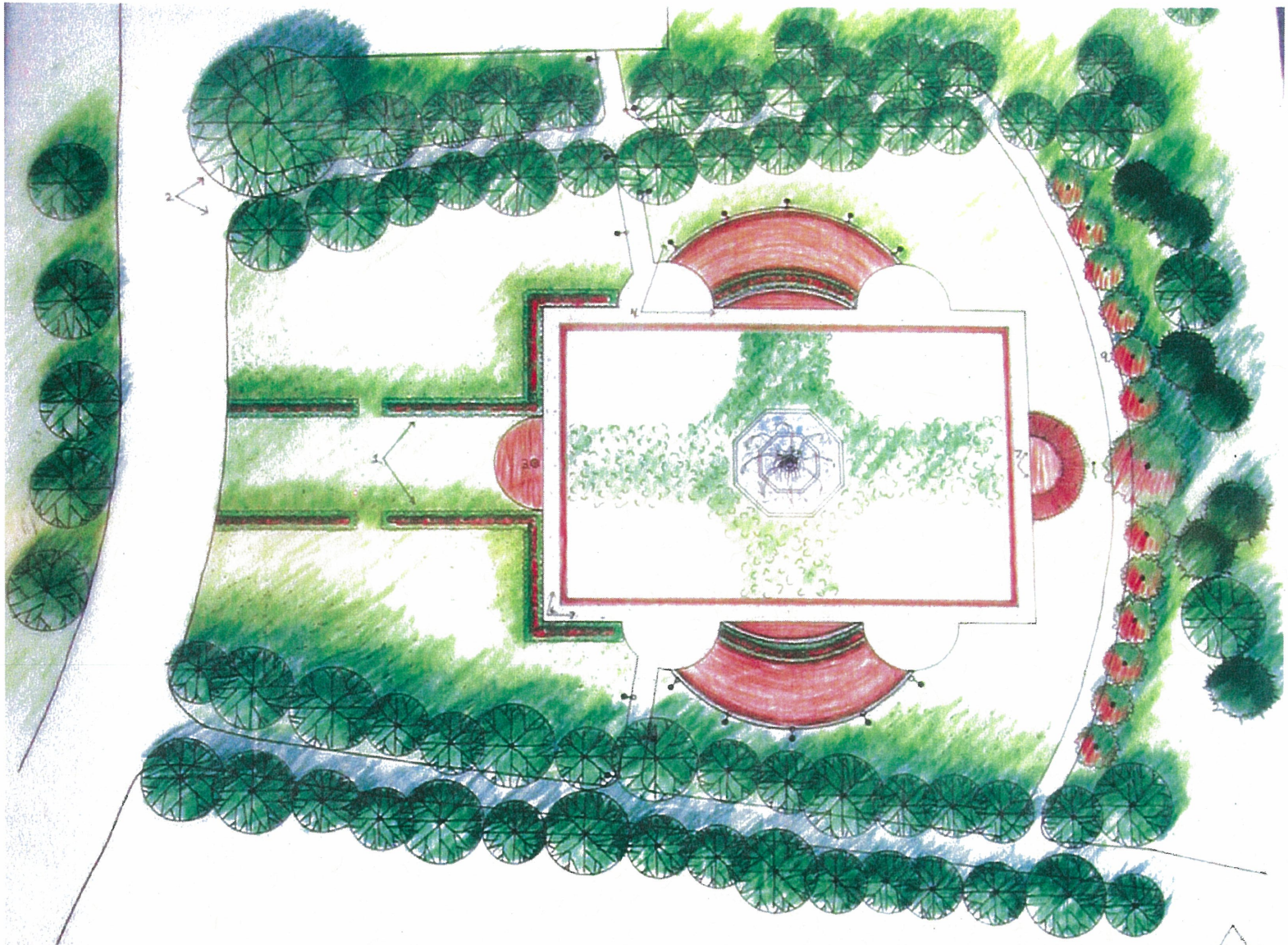


9A-H1783

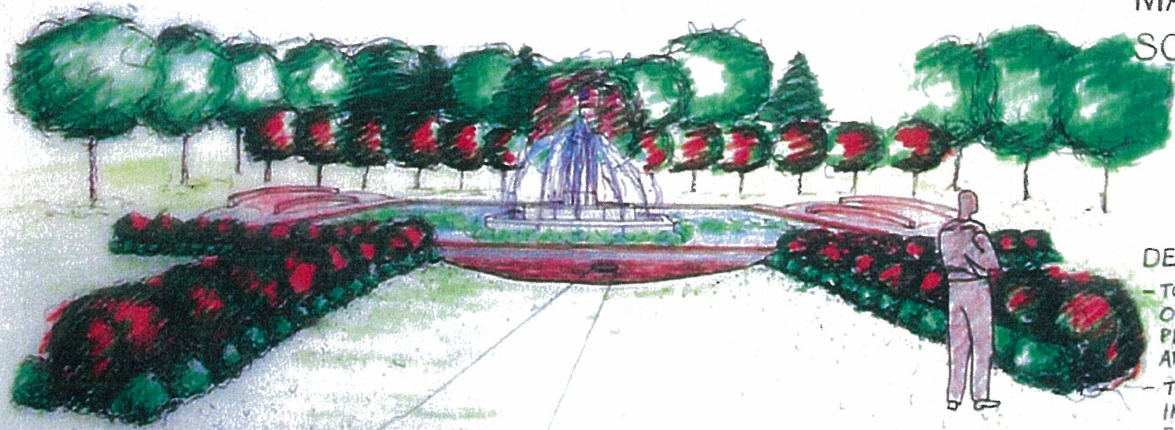


Landsdowne Park, East St. Louis, Ill.





MASTER PLAN
SCALE: 1"=20'00"



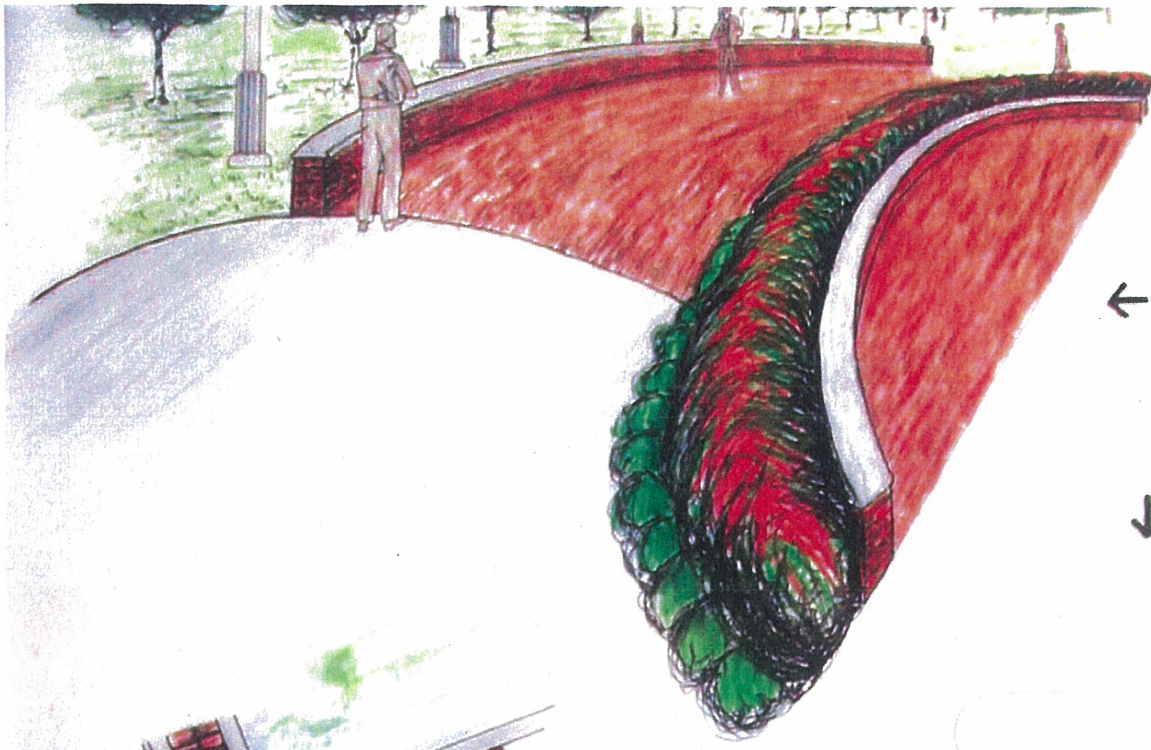
DESIGN INTENTIONS

- TO MAKE THE JONES PARK FOUNTAIN AN OF MRS. KING THROUGH HER WELCOMING PERSONALITY, LOVE OF THE COMMUNITY AND LOVE OF GARDENING
- TO MAKE THE JONES PARK FOUNTAIN AN INVITING DESTINATION AND FOCAL POINT EAST ST LOUIS.
- TO MAKE A SETTING WHERE PERSONAL CONTEMPLATION AND GROUP ACTIVITIES BOTH BE ENJOYED.



- ↑ **1. CEREMONIAL ENTRY**
 - PROVIDES AN UNOBSTRUCTED VIEW OF THE FOUNTAIN
 - LINED WITH ROSE BUSHES AND BOXWOODS TO PROVIDE YEAR ROUND ENJOYMENT
 - WONDERFUL SETTING FOR WEDDINGS AND CEREMONIES
- **2. ENTRY PATHS**
 - BEAUTIFUL AND INVITING TREE LINED PATHS
 - CONNECT TO PATHS AROUND LAGOON AND CONTINUE PATH SYSTEM AROUND THE FOUNTAIN
 - MAKES THE FOUNTAIN THE DESTINATION OF THE EXISTING PATHS



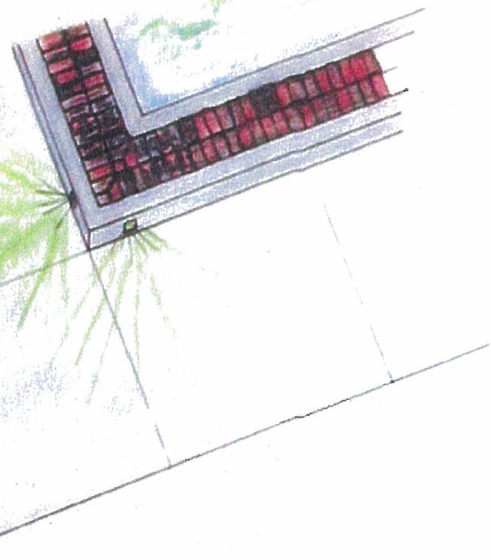
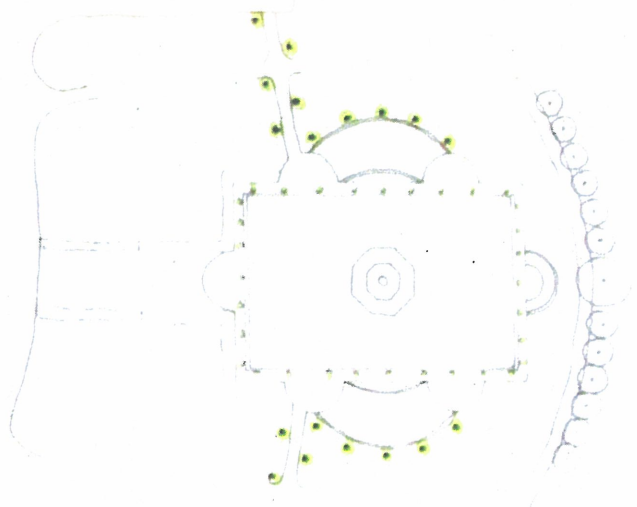


← 4 PATIO AREA

- SEATWALL CLOSE TO FOUNTAIN FOR PERSONAL CONTEMPLATION
- LARGE PATIO AREA WITH SEATWALL, INTENDED FOR GROUP ACTIVITIES OR RECEPTIONS
- OVERHEAD LIGHTING BEHIND SEATWALL

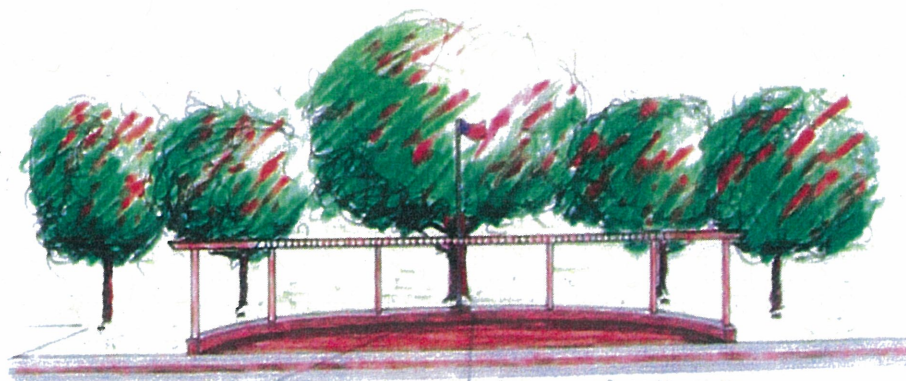
↓ 5. LIGHTING PLAN

- LIGHTING BEHIND SEATWALL AND ALONG ENTRY PATHS ARE OVERHEAD STREETLIGHTS
- LIGHTING SURROUNDING FOUNTAIN, ALONG SIDEWALK, ARE MOUNTED INTO CURB AND ILLUMINATE SIDEWALK



↑ 6. CURB DETAIL

- 6" CURB SURROUNDING FOUNTAIN
- INLAYED WITH DONATION BRICKS
- CONTAINS LIGHTING WITHIN CURB TO ILLUMINATE SIDEWALK



↑ 9. FAMILY TREE PLAQUE

- ONE PLAQUE WILL BE PLACED AT THE BASE OF A



↑ 7. MEMORIAL PATIO

- CONTAINS SEATWALL AND OVERHEAD TRELLIS TO CREATE A SPECIAL AREA
- THE MEMORIAL SCULPTURE IS PLACED ON SEATWALL
- PATIO IS BACKED TO THE EAST BY THE FAMILY TREE AREA

